

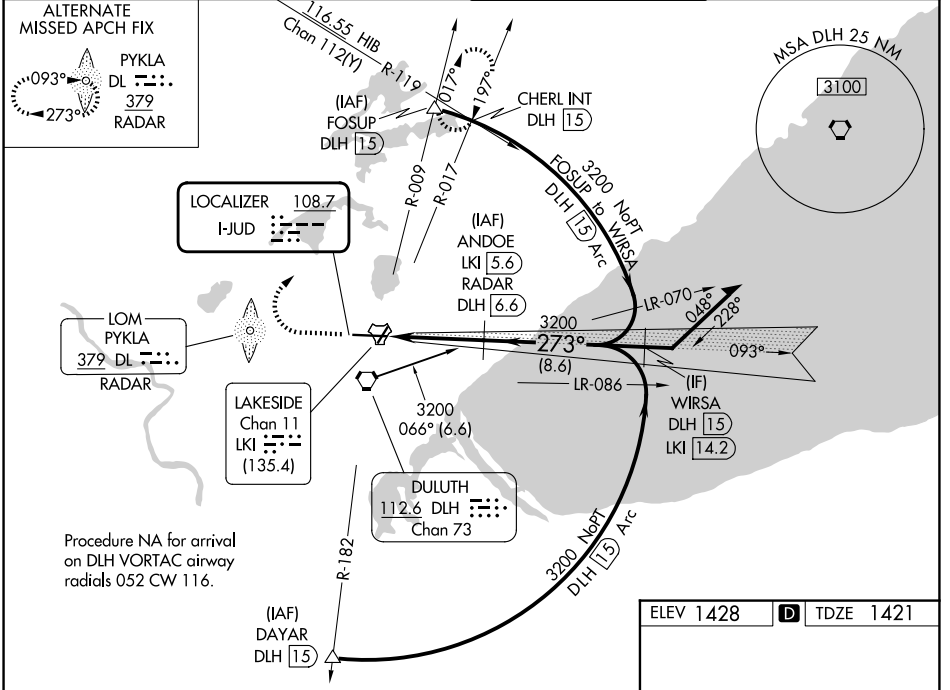
LOC I-JUD 108.7	APP CRS 273°	Rwy Ldg TDZE Apt Elev	10062 1421 1428
---------------------------	------------------------	-----------------------------	--

ILS or LOC RWY 27

DULUTH INTL (DLH)

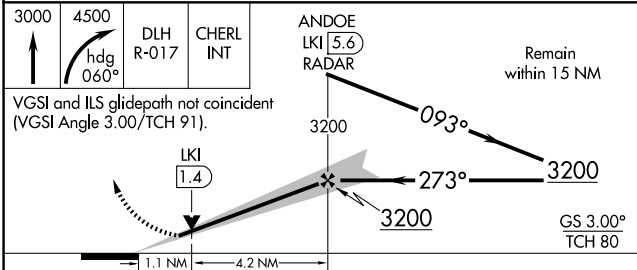
DME or RADAR required.		MALSR	MISSED APPROACH: Climb to 3000 then climbing right turn to 4500 on heading 060° and DLH VORTAC R-017 to CHERL INT/ DLH 15 DME and hold.
<p>⚠ Circling NA for Cat E southeast of Rwy 3 and 27. Inop table does not apply to S-ILS 27. DME from LKI TACAN.</p> <p>⚠ DME use requires simultaneous reception of I-JUD and LKI DME. For inop ALS, increase S-LOC 27 Cat E visibility to 1/4 SM.</p>			

ATIS 124.1 270.1	DULUTH APP CON 125.45 233.7	DULUTH TOWER 118.3 257.8	GND CON 121.9 348.6
----------------------------	---------------------------------------	------------------------------------	-------------------------------



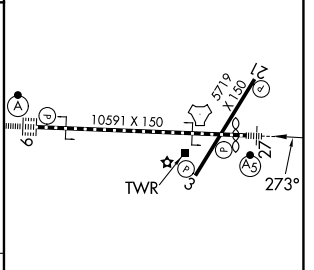
NC-1, 14 MAY 2026 to 11 JUN 2026

NC-1, 14 MAY 2026 to 11 JUN 2026



ELEV 1428	D TDZE 1421
-----------	--------------------

CATEGORY	A	B	C	D	E
S-ILS 27	1621/40	200 (200-3/4)	1651/40	230 (300-3/4)	
S-LOC 27	1860/24	439 (500-1/2)	1860/40	439 (500-3/4)	
CIRCLING	1880-1 452 (500-1)	1900-1 472 (500-1)	1940-1 1/2 512 (600-1 1/2)	2400-3	972 (1000-3)



TDZL/RCLS Rwy 9					
REIL Rwy 3 and 21					
HIRL Rwy 9-27					
MIRL Rwy 3-21					
FAF to MAP 5.3 NM					
Knots	60	90	120	150	180
Min:Sec	5:18	3:32	2:39	2:07	1:46