

WAAS CH 40114 W21A	APP CRS 213°	Rwy Ldg TDZE 1420 Apt Elev 1428	5719
--	------------------------	---	-------------

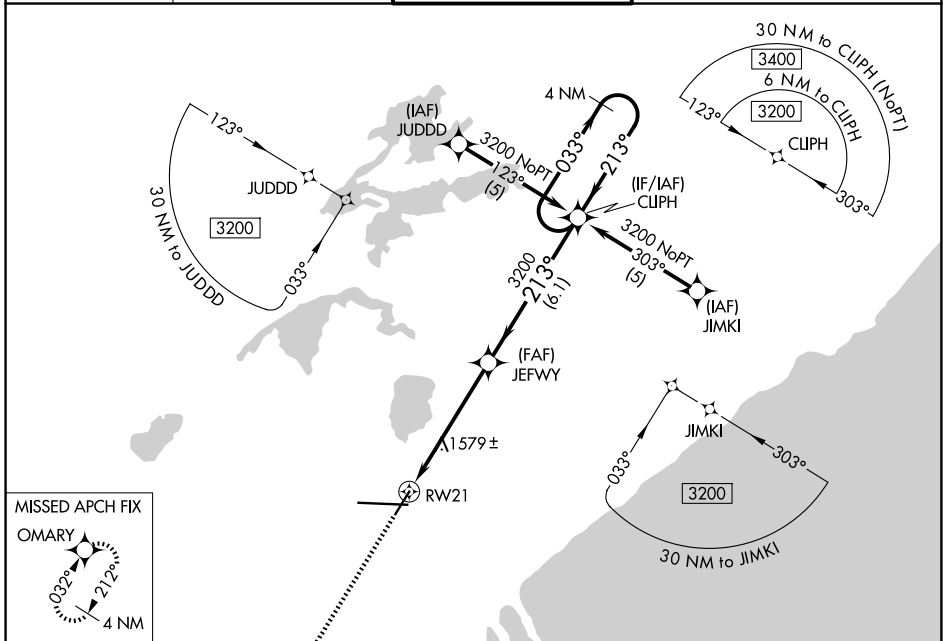
RNAV (GPS) RWY 21

DULUTH INTL (DLH)

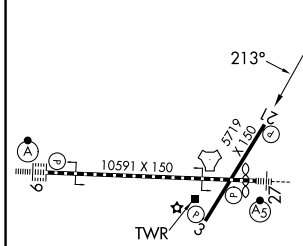
ASR For uncompensated Baro-VNAV systems, LNAV/VNAV NA below -17°C (2°F) or above 46°C (115°F). DME/DME RNP-0.3 NA. Rwy 21 helicopter visibility reduction below ¾ SM NA.

MISSED APPROACH: Climb to 3200 direct OMARY and hold.

ATIS 124.1 270.1	DULUTH APP CON 125.45 233.7	DULUTH TOWER 118.3 257.8	GND CON 121.9 348.6
----------------------------	---------------------------------------	------------------------------------	-------------------------------



ELEV 1428	D	TDZE 1420
-----------	----------	-----------



3200	OMARY	JEFWY	CLIPH	4 NM Holding Pattern
↑	✦	3200	3200	
*LNAV only		*1.2 NM to RWY 21		
3200	213°	033°	213°	3200
RWY 21		GP 3.00° TCH 40		
1.2 NM	4.2 NM	6.1 NM		

CATEGORY	A	B	C	D
LPV DA	1708-1 288 (300-1)			
LNAV/VNAV DA	1927-1¾ 507 (500-1¾)			
LNAV MDA	1840-1	420 (500-1)	1840-1¼	420 (500-1¼)
CIRCLING	1880-1 452 (500-1)	1900-1 472 (500-1)	1940-1½ 512 (600-1½)	2400-3 972 (1000-3)

TDZL/RCLS Rwy 9
REIL Rwys 3 and 21
HIRL Rwys 9-27
MIRL Rwys 3-21

DULUTH, MINNESOTA
Orig-B 19JUL18

46°51'N-92°12'W

DULUTH INTL (DLH) RNAV (GPS) RWY 21

NC-1, 14 MAY 2026 to 11 JUN 2026

NC-1, 14 MAY 2026 to 11 JUN 2026