

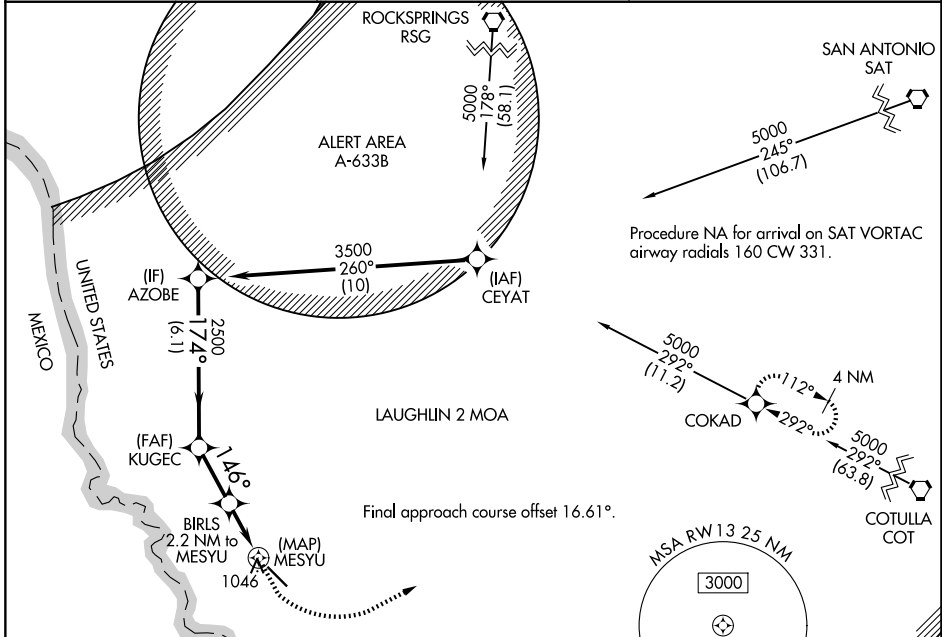
WAAS CH 65942 W13A	APP CRS 146°	Rwy Ldg TDZE Apt Elev	5506 887 887
--	------------------------	-----------------------------	---

RNAV (GPS) RWY 13

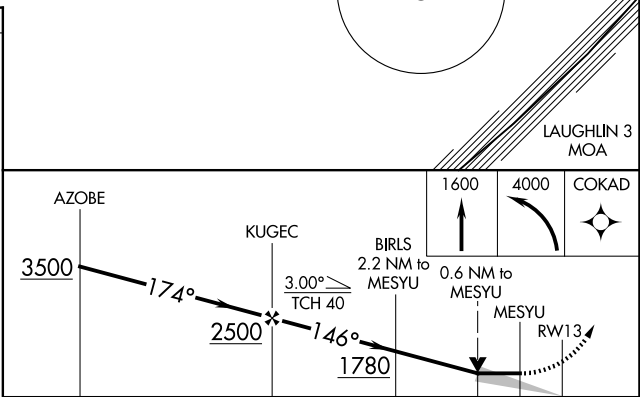
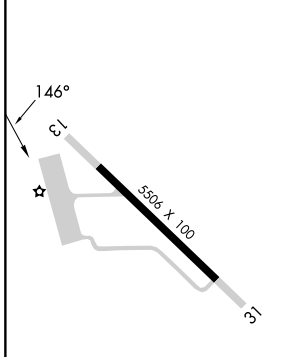
MAVERICK COUNTY MEML INTL (5T9)

RNP APCH. ▽	MISSED APPROACH: Climb to 1600 then climbing left turn to 4000 direct COKAD and hold.
----------------	---

AWOS-3 119.175	DEL RIO APP CON ★ 127.75 326.2	UNICOM 122.8 (CTAF) 0
--------------------------	--	---------------------------------



ELEV 887	TDZE 887
----------	----------



CATEGORY	A	B	C	D
LP MDA	1260-1 373 (400-1)			NA
LNAV MDA	1360-1	473 (500-1)	1360-1 $\frac{3}{8}$ 473 (500-1 $\frac{3}{8}$)	NA

SC-3, 14 MAY 2026 to 11 JUN 2026

SC-3, 14 MAY 2026 to 11 JUN 2026