

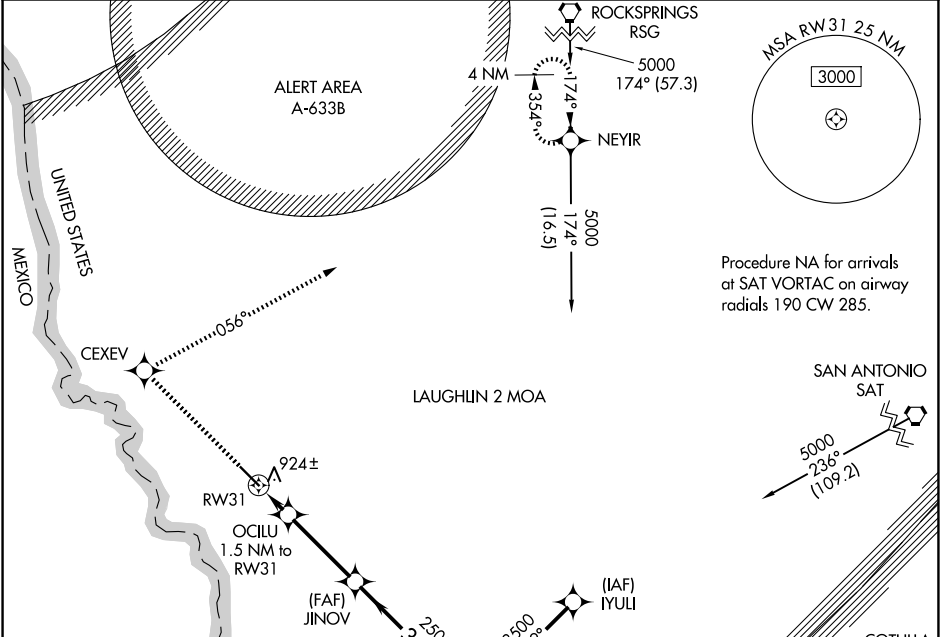
WAAS CH <b>63207</b> <b>W31A</b>	APP CRS <b>309°</b>	Rwy Ldg <b>5506</b> TDZE <b>882</b> Apt Elev <b>887</b>
--	------------------------	---

# RNAV (GPS) RWY 31

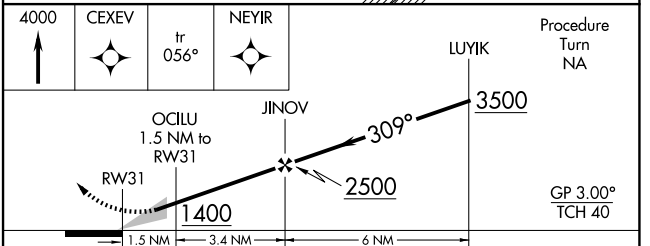
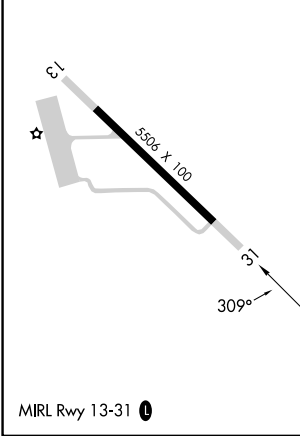
MAVERICK COUNTY MEML INTL (5T9)

RNP APCH - GPS.	MISSED APPROACH: Climb to 4000 direct CEXEV and via 056° track to NEYIR and hold.
-----------------	---

AWOS-3 <b>119.175</b>	DEL RIO APP CON ★ <b>127.75 326.2</b>	UNICOM <b>122.8 (CTAF) 0</b>
--------------------------	--	---------------------------------



ELEV 887	TDZE 882
----------	----------



CATEGORY	A	B	C	D
LPV DA	1236-1¼	354 (400-1¼)		NA
LNAV/VNAV DA	1298-1½	416 (500-1½)		NA
LNAV MDA	1280-1	398 (400-1)	1280-1⅛ 398 (400-1⅛)	NA
CIRCLING	1500-1	613 (700-1)	1500-1¾ 613 (700-1¾)	NA

SC-3, 14 MAY 2026 to 11 JUN 2026

SC-3, 14 MAY 2026 to 11 JUN 2026