

| | | |
|-------------|----------|-------------|
| APP CRS | Rwy Ldg | 4347 |
| 032° | TDZE | 1972 |
| | Apt Elev | 1987 |

RNAV (GPS) RWY 5

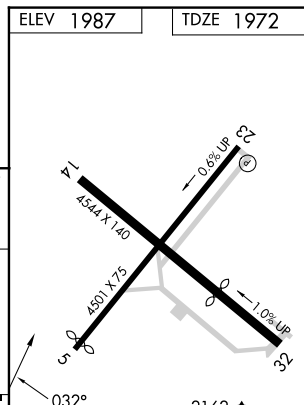
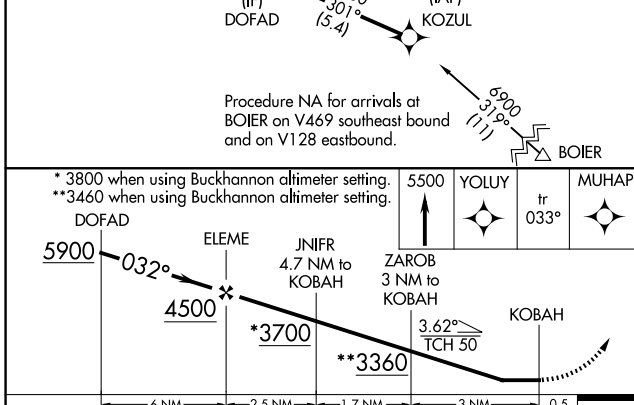
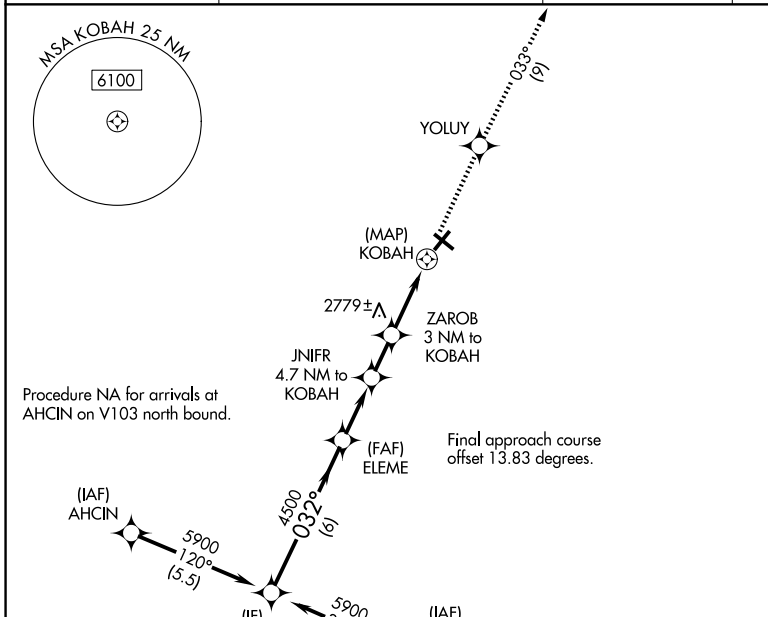
ELKINS/RANDOLPH COUNTY (JENNINGS RANDOLPH FLD) (EKN)

RNP APCH.

⚠ Circling Rwy 14, 23, 32 NA at night. When local altimeter setting not received, use Buckhannon altimeter setting and increase all MDA 100 feet.
⚠ Straight-in minimums NA when using Buckhannon altimeter setting.
⚠ Rwy 5 helicopter visibility reduction below 3/4 SM NA.

MISSED APPROACH: Climb to 5500 direct YOLUY and on track 033° to MUHAP and hold.

| | | |
|------------------------|--|----------------------|
| ASOS 119.275 | CLARKSBURG APP CON ★ 121.15 284.65 | CTAF 123.6 |
| 122.9 0 | | |



| | | | | |
|----------|---------------------------|---------------------------|-------------------------|-------------------------|
| CATEGORY | A | B | C | D |
| LNVA MDA | 3040-1½ 1068 (1100-1¼) | 3040-1½ 1068 (1100-1½) | 3040-3 1068 (1100-3) | NA |
| CIRCLING | 3040-1½ 1053 (1100-1¼) | 3140-1½ 1153 (1200-1½) | 3720-3 1733 (1800-3) | 4020-3 2033 (2100-3) |

| | |
|------------------------|-----------|
| ELEV 1987 | TDZE 1972 |
| REIL Rwy 23 0 | |
| MIRL Rwy 5-23 0 | |

NE-4, 14 MAY 2026 to 11 JUN 2026

NE-4, 14 MAY 2026 to 11 JUN 2026