

FORT BLISS, TEXAS

ILS or LOC RWY 22

I-BIF LOC/DME 110.9 Chan 46	APCH CRS 216°	Rwy Idg 13,553 TDZE 3947 Arpt Elev 3947
---	-------------------------	--

[USA]

BIGGS AAF (KBIF)

RADAR required when R-5103-A,B,C, R-5107K are active. SSALR MISSED APPROACH: Climb to 4600, then climbing left turn to 9000 direct ELP VORTAC. Proceed outbound ELP R-040 to PIERS intersection and hold. Continue climb in hold to 9000.

*Circling not authorized for CAT DE NW of Rwy 4.

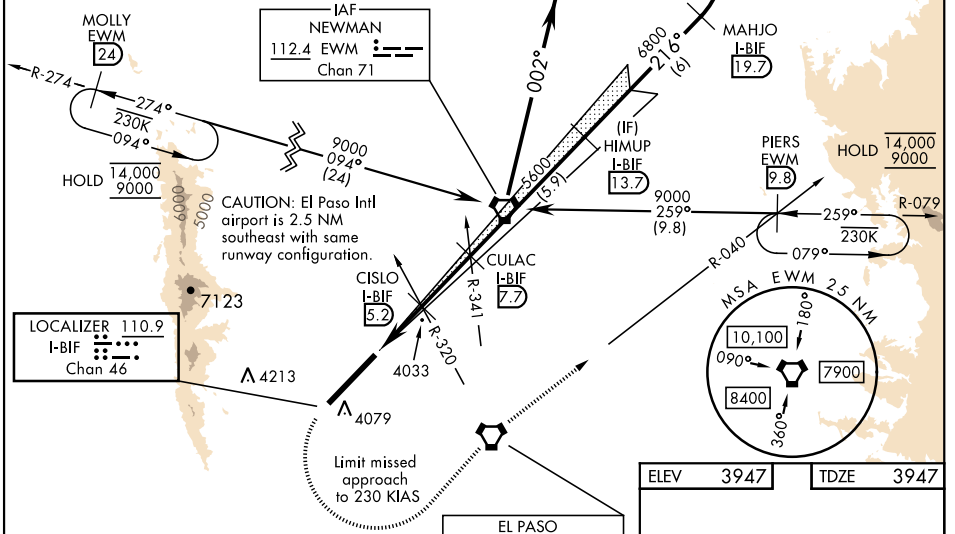
EL PASO ATIS 120.0 254.3	EL PASO APP 119.15 353.5 (S of V16) 124.25 298.85 (N of V16)	TOWER 127.9 342.25	GND CON 121.6 251.125	ASR
------------------------------------	--	------------------------------	---------------------------------	-----

Arrivals expect RADAR vectors to final when restricted areas are active.

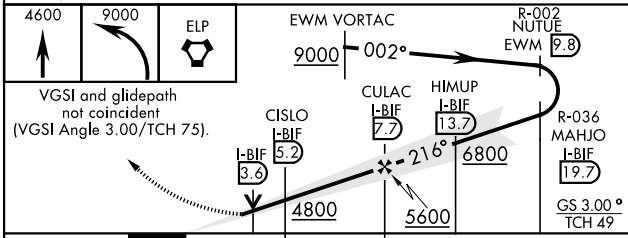
Procedure NA via V-94-611, T317 westbound without holding at MOLLY. ATC clearance required.

Procedure NA via V-560 eastbound without holding at PIERS. ATC clearance required.

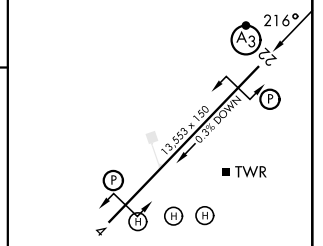
Inop table does not apply.



EMERG SAFE ALT 100 NM 13,100



ELEV 3947	TDZE 3947
-----------	-----------



CATEGORY	A	B	C	D	E
S-ILS 22		4147- $\frac{3}{4}$	200	(200- $\frac{3}{4}$)	
S-LOC 22		4300-1	353	(400-1)	
CIRCLING*	4380-1 433 (500-1)	4400-1 453 (500-1)	4560-1 $\frac{3}{4}$ 613 (700-1 $\frac{3}{4}$)	4560-2 613 (700-2)	4560-2 $\frac{1}{2}$ 613 (700-2 $\frac{1}{2}$)

HIRL Rwy 04-22					
REIL Rwy 04, 22					
FAF to MAP 5.0 NM					
Knots	60	90	120	150	180
Min:Sec	5:00	3:20	2:30	2:00	1:40

FORT BLISS, TEXAS

31° 51' N - 106° 23' W

BIGGS AAF (KBIF)

Orig 25JAN24

ILS or LOC RWY 22

SC-3, 14 MAY 2026 to 11 JUN 2026

SC-3, 14 MAY 2026 to 11 JUN 2026