

RNAV (GPS) RWY 22

APCH CRS	Rwy Idg	13.553
216°	TDZE	3947
	Arpt Elev	3947

[USA]

BIGGS AAF (KBIF)

RNP APCH - GPS
 RADAR required when R-5103A, R-5103B, R-5103C, 5107K are active.
 * Circling not authorized for CAT D West of Rwy 4-22.



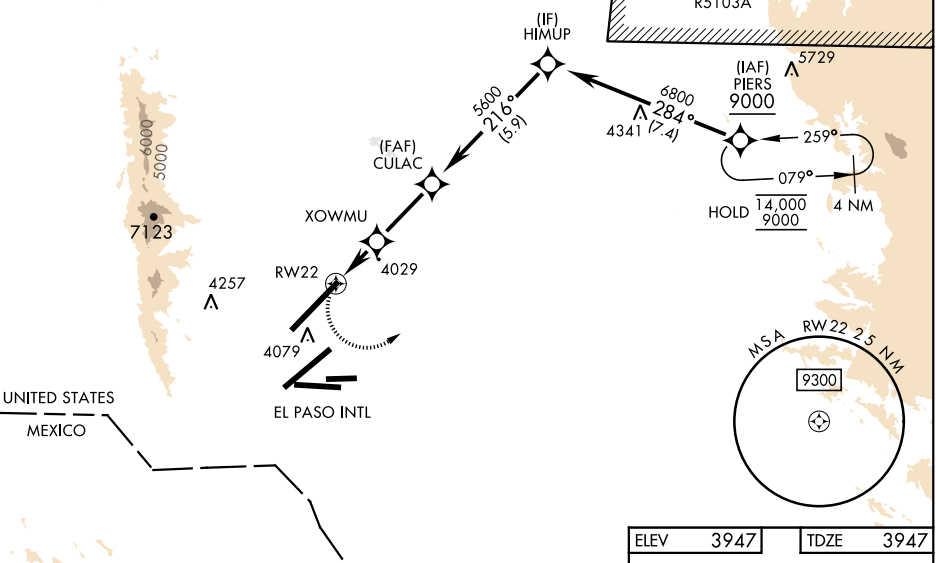
MISSED APPROACH: Climb to 4400 then climbing left turn to 9000 direct PIERS and hold, continue climb-in-hold to 9000.

ATIS	EL PASO APP	TOWER	GND CON	ASR
120.0 254.3	119.15 353.5 (S of V16) 124.25 298.85 (N of V16)	127.9 342.25	121.6 251.125	

Arrivals expect RADAR vectors to final when restricted areas are active.

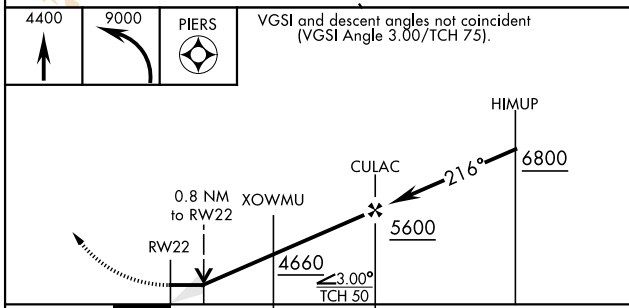
Procedure not authorized via V-560 eastbound without holding at PIERS. ATC clearance required.

CAUTION: EL PASO INTL airport is 2.5 NM southeast with same runway configuration.

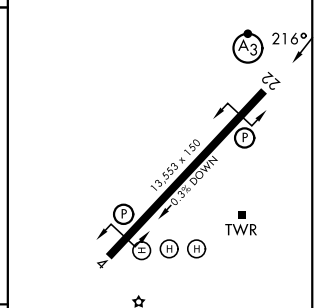
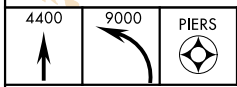


SC-3, 14 MAY 2026 to 11 JUN 2026

SC-3, 14 MAY 2026 to 11 JUN 2026



ELEV	3947	TDZE	3947
------	------	------	------



CATEGORY	A	B	C	D	
LNVA MDA	4280-1		333	(400-1)	
CIRCLING *	4400-1	453 (500-1)	4560-1 3/4 613 (700-1 3/4)	4560-2 613 (700-2)	HIRL Rwy 4-22 REIL Rws 4 and 22

RNAV (GPS) RWY 22