

FORT BLISS, TEXAS

# VOR or TACAN RWY 22

BIGGS AAF (KBIF)

EWM VORTAC <b>112.4</b> Chan <b>71</b>	APCH CRS <b>210°</b>	Rwy Idg <b>13,553</b> TDZE <b>3947</b> Arprt Elev <b>3947</b>
--	-------------------------	---

[USA]

\* Circling CAT DE not authorized W of Rwy 4-22.



MISSED APPROACH: Climbing left turn to 8000 direct EWM VORTAC and hold, continue climb-in-hold to 8000. (TACAN only aircraft continue on EWM R-079 to PIERS INT/ EWM 9.8 DME and hold, continue climb-in-hold to 9000).

ATIS <b>120.0 254.3</b>	EL PASO APP <b>119.15 353.5</b> (S of V16) <b>124.25 298.85</b> (N of V16)	TOWER <b>127.9 342.25</b>	GND CON <b>121.6 251.125</b>	ASR
----------------------------	--	------------------------------	---------------------------------	-----

Use El Paso Intl altimeter setting.

Inop table does not apply.

Arrivals expect RADAR vectors to final when restricted areas are active.

TACAN only equipped aft:

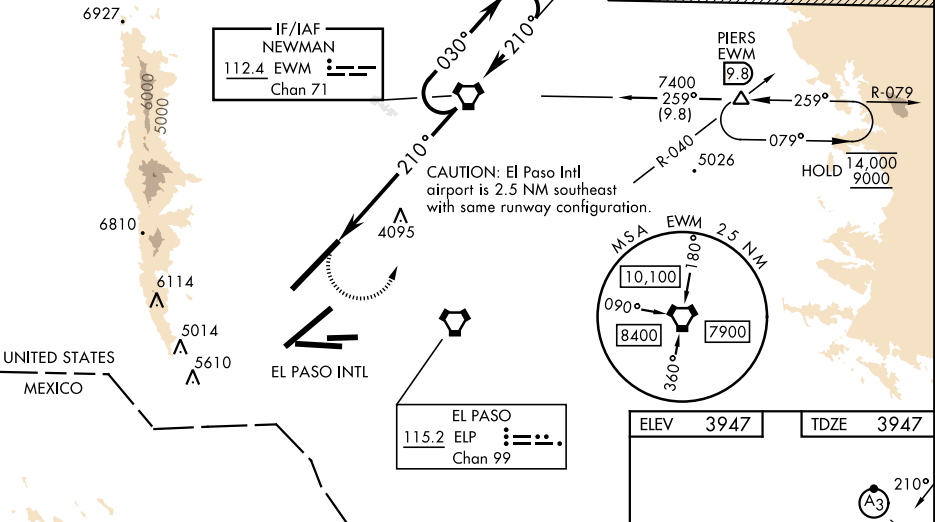
Final apch from holding pattern not authorized.

RADAR vectors required to final approach course.

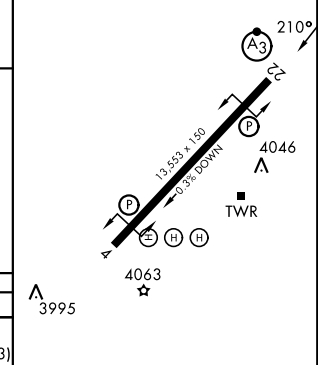
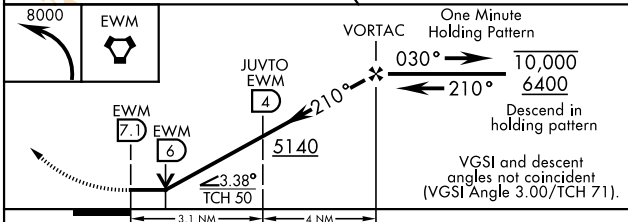
Procedure not authorized via V-560

eastbound without holding at PIERS.

ATC clearance required.



ELEV 3947	TDZE 3947
-----------	-----------



CATEGORY	A	B	C	D	E
S-22	5140-1¼		1193 (1200-1¼)		5140-3 1193(1200-3)
CIRCLING *	5140-1¼ 1193 (1200-1¼)	5140-1½ 1193 (1200-1½)	5140-3	1193	(1200-3)
JUVTO FIX MINIMUMS					
S-22	4380-1	433 (500-1)	4380-1¼	433	(500-1¼)

HIRL Rwy 4-22  
REIL Rwy 4 and 22

FAF to MAP 7.1 NM

Knots	60	90	120	150	180
Min:Sec	7:06	4:44	3:33	2:50	2:22

FORT BLISS, TEXAS

31° 51' N - 106° 23' W

BIGGS AAF (KBIF)

Amdt 9 05OCT23

# VOR or TACAN RWY 22

SC-3, 14 MAY 2026 TO 11 JUN 2026

SC-3, 14 MAY 2026 TO 11 JUN 2026