

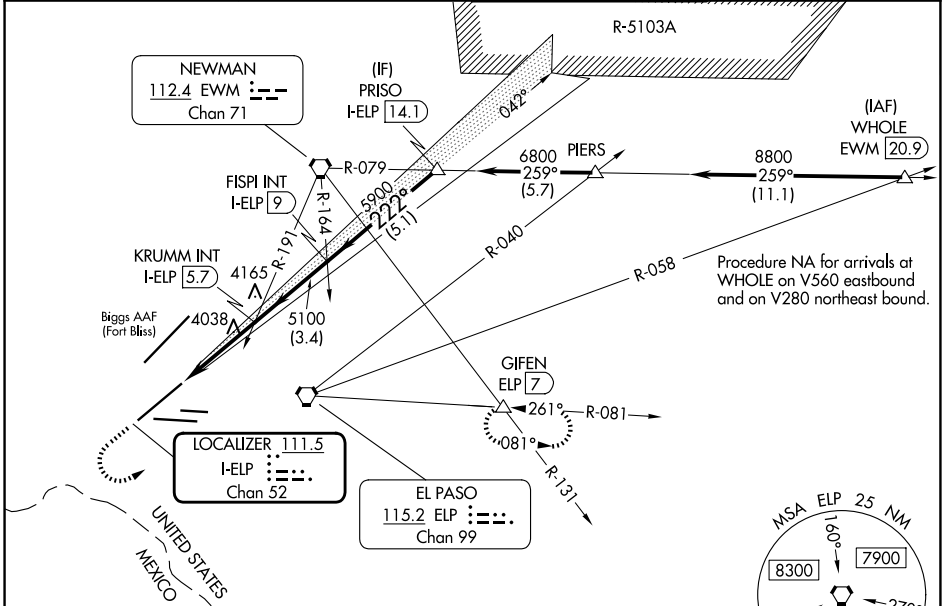
LOC/DME I-ELP 111.5 Chan 52	APP CRS 222°	Rwy Ldg TDZE Apt Elev	12020 3950 3962
---	------------------------	-----------------------------	--

ILS or LOC RWY 22

EL PASO INTL (ELP)

RADAR required when R-5103 in use.		MALSR	MISSED APPROACH: Climb to 4600 then climbing left turn to 8000 on heading 050° and on ELP VORTAC R-081 to GIFEN INT/ELP 7 DME and hold, continue climb-in-hold to 8000.
<p>⚠ Circling NA for Cat D and E north of Rwy 26R and northwest of Rwy 4. For inop ALS, increase S-LS 22 Cat E visibility to RVR 4000, S-LOC 22 ASR Cats C/D/E to RVR 5500.</p>			

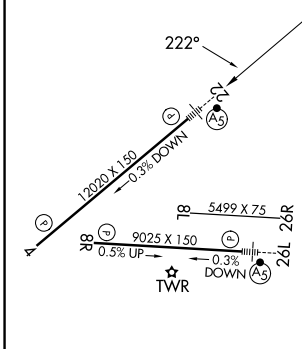
D-ATIS 120.0 254.3	EL PASO APP CON 124.25 298.85	EL PASO TOWER 118.3 239.275	GND CON 121.9 348.6
------------------------------	---	---------------------------------------	-------------------------------



SC-3, 14 MAY 2026 to 11 JUN 2026

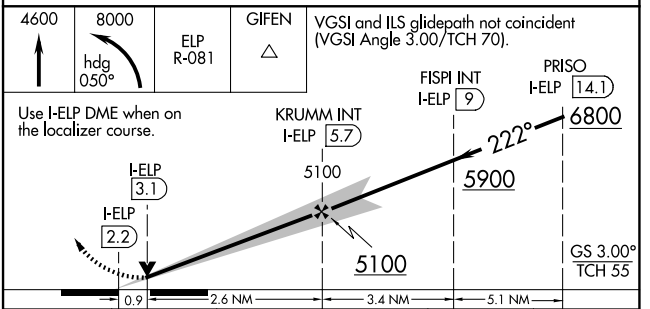
SC-3, 14 MAY 2026 to 11 JUN 2026

ELEV 3962	D	TDZE 3950
-----------	----------	-----------



MIRL Rwy 8L-26R
REIL Rwys 4 and 8R
HIRL Rwys 4-22 and 8R-26L
FAF to MAP 3.4 NM

Knots	60	90	120	150	180
Min:Sec	3:24	2:16	1:42	1:22	1:08



CATEGORY	A	B	C	D	E
S-ILS 22	4150/24 200 (200-1/2)				
S-LOC 22	4300/24	350 (400-1/2)	4300/30 350 (400-5/8)		
CIRCLING	4420-1 458 (500-1)	4440-1 478 (500-1)	4480-1 1/2 518 (600-1 1/2)	4680-2 1/4 718 (800-2 1/4)	4700-2 1/2 738 (800-2 1/2)