

APP CRS	Rwy Ldg	<b>5499</b>
<b>265°</b>	TDZE	<b>3950</b>
	Apt Elev	<b>3962</b>

# RNAV (GPS) RWY 26R

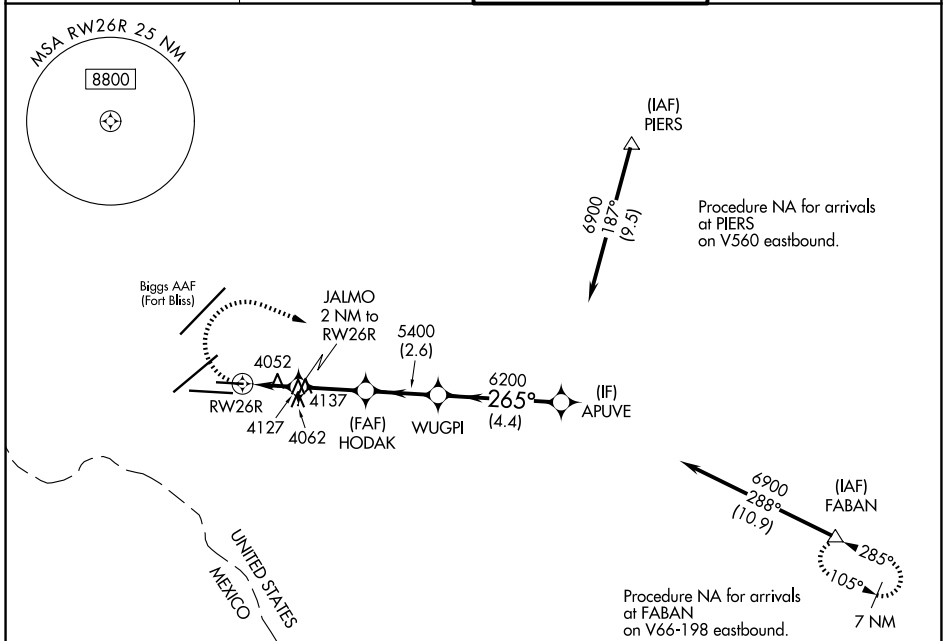
EL PASO INTL (ELP)

RNP APCH-GPS.

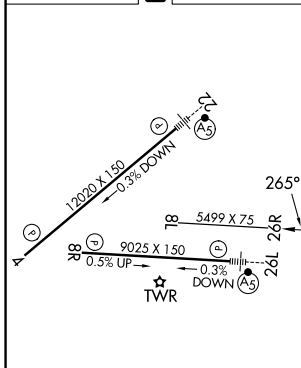
**ASR** Circling NA for Cat D north of Rwy 26R and northwest of Rwy 4. Rwy 26R helicopter visibility reduction below 3/4 SM NA.

MISSED APPROACH: Climbing right turn 7500 direct FABAN and hold.

D-ATIS <b>120.0 254.3</b>	EL PASO APP CON <b>124.25 298.85</b>	EL PASO TOWER <b>118.3 239.275</b>	GND CON <b>121.9 348.6</b>
------------------------------	---	---------------------------------------	-------------------------------



ELEV 3962	<b>D</b>	TDZE 3950
-----------	----------	-----------



CATEGORY	A	B	C	D
LNAV MDA	4400-1	450 (500-1)	4400-1 3/8	450 (500-1 3/8)
CIRCLING	4420-1 458 (500-1)	4440-1 478 (500-1)	4480-1 1/2 518 (600-1 1/2)	4680-2 1/4 718 (800-2 1/4)

MIRL Rwy 8L-26R  
REIL Rwy 4 and 8R  
HIRL Rwy 4-22 and 8R-26L

SC-3, 14 MAY 2026 to 11 JUN 2026

SC-3, 14 MAY 2026 to 11 JUN 2026