

APP CRS Rwy Ldg **12020**  
**042°** TDZE **3923**  
 Apt Elev **3962**

# RNAV (RNP) Y RWY 4

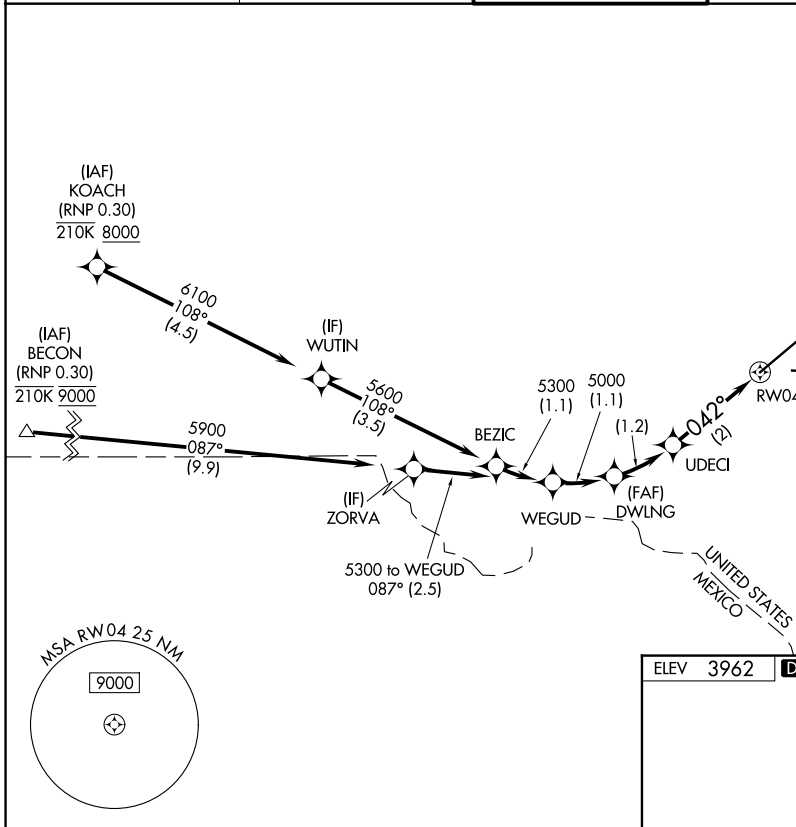
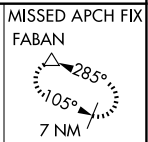
EL PASO INTL (ELP)

RNP AR APCH. RF required.

▼ For uncompensated Baro-VNAV systems, procedure NA below -22°C ASR or above 54°C.

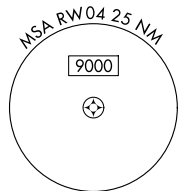
MISSED APPROACH: Climb to 4400 then climbing right turn to 7500 direct FABAN and hold.

D-ATIS <b>120.0 254.3</b>	EL PASO APP CON <b>124.25 298.85</b>	EL PASO TOWER <b>118.3 239.275</b>	GND CON <b>121.9 348.6</b>
------------------------------	---	---------------------------------------	-------------------------------

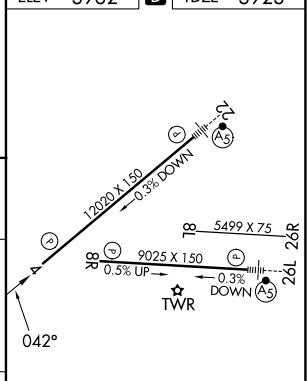
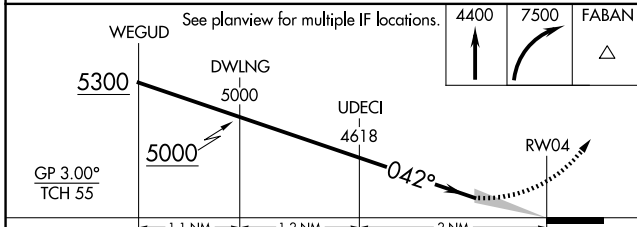


SC-3, 14 MAY 2026 to 11 JUN 2026

SC-3, 14 MAY 2026 to 11 JUN 2026



ELEV 3962 TDZE 3923



CATEGORY	A	B	C	D
RNP 0.20 DA		4271/55	348 (400-1)	
RNP 0.30 DA		4340/60	417 (400-1½)	

## AUTHORIZATION REQUIRED

MIRL Rwy 8L-26R  
 REIL Rwy 4 and 8R  
 HIRL Rwy 4-22 and 8R-26L