

RNAV (RNP) Z RWY 26L EL PASO INTL (ELP)

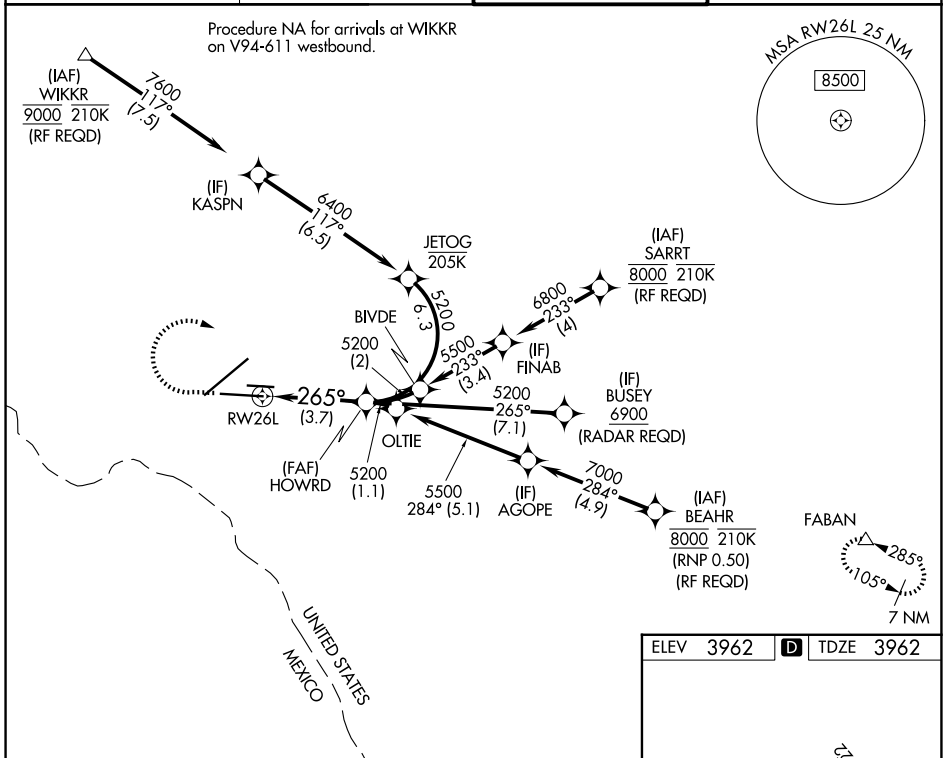
APP CRS 265°	Rwy Ldg TDZE Apt Elev	9025 3962 3962
------------------------	-----------------------------	---

ASR For uncompensated Baro-VNAV systems, procedure NA below -8°C (18°F) or above 50°C (122°F). For inop MALSRS, increase RNP 0.30 visibility all Cats to 1 mile. GPS required.



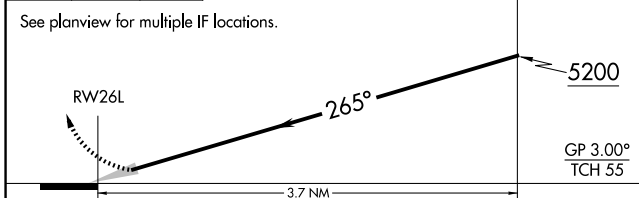
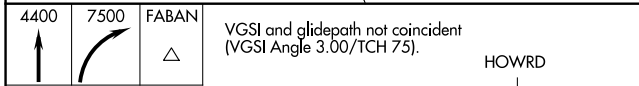
MISSED APPROACH: Climb to 4400, then climbing right turn to 7500 direct FABAN and hold.

D-ATIS 120.0 254.3	EL PASO APP CON 124.25 298.85	EL PASO TOWER 118.3 239.275	GND CON 121.9 348.6
------------------------------	---	---------------------------------------	-------------------------------



SC-3, 14 MAY 2026 to 11 JUN 2026

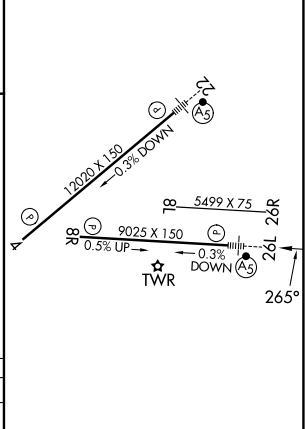
SC-3, 14 MAY 2026 to 11 JUN 2026



CATEGORY	A	B	C	D
RNP 0.30 DA		4275-1/2	313 (400-1/2)	

AUTHORIZATION REQUIRED

ELEV 3962	D TDZE 3962
-----------	--------------------



MIRL Rwy 8L-26R
REIL Rwys 4 and 8R
HIRL Rwys 4-22 and 8R-26L