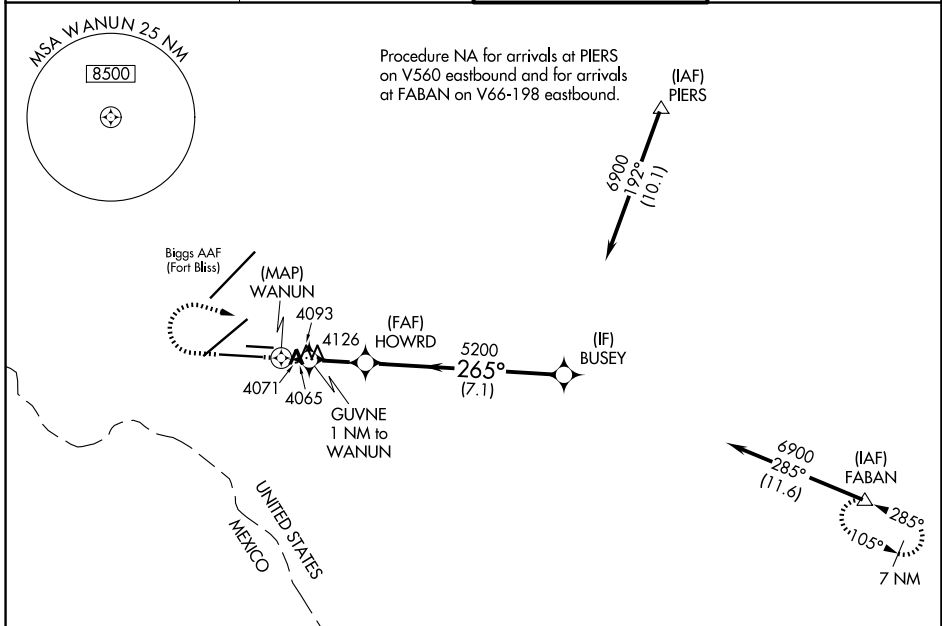


WAAS CH <b>40223</b> <b>W26A</b>	APP CRS <b>265°</b>	Rwy Ldg TDZE Apt Elev	<b>9025</b> <b>3962</b> <b>3962</b>
--	------------------------	-----------------------------	---

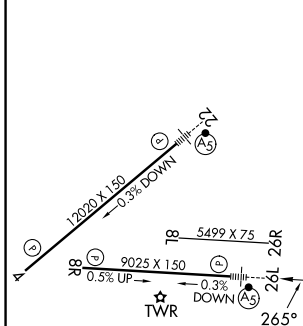
# RNAV (GPS) Y RWY 26L

EL PASO INTL (ELP)

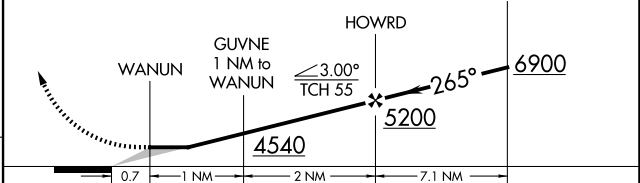
RNP APCH-GPS.		MALSR	MISSED APPROACH: Climb to 4380 then climbing right turn to 7500 direct FABAN and hold.
<p>⚠ Circling NA for Cat D west of Rwy 4-22. For inop ALS, increase LP and LNAV Cat A/B visibility to 1 SM, and Cat C/D to 1½ SM.</p>			
D-ATIS <b>120.0 254.3</b>	EL PASO APP CON <b>124.25 298.85</b>	EL PASO TOWER <b>118.3 239.275</b>	GND CON <b>121.9 348.6</b>



ELEV 3962	<b>D</b>	TDZE 3962
-----------	----------	-----------



4380	7500	FABAN	VGSI and descent angles not coincident (VGSI Angle 3.00/TCH 75).
------	------	-------	--



CATEGORY	A	B	C	D
LP MDA	4380-¾ 418 (500-¾)			
LNAV MDA	4380-¾ 418 (500-¾)			
CIRCLING	4420-1 458 (500-1)	4440-1 478 (500-1)	4480-1½ 518 (600-1½)	4680-2¼ 718 (800-2¼)

MIRL Rwy 8L-26R  
REIL Rwy 4 and 8R  
HIRL Rwy 4-22 and 8R-26L

SC-3, 14 MAY 2026 to 11 JUN 2026

SC-3, 14 MAY 2026 to 11 JUN 2026