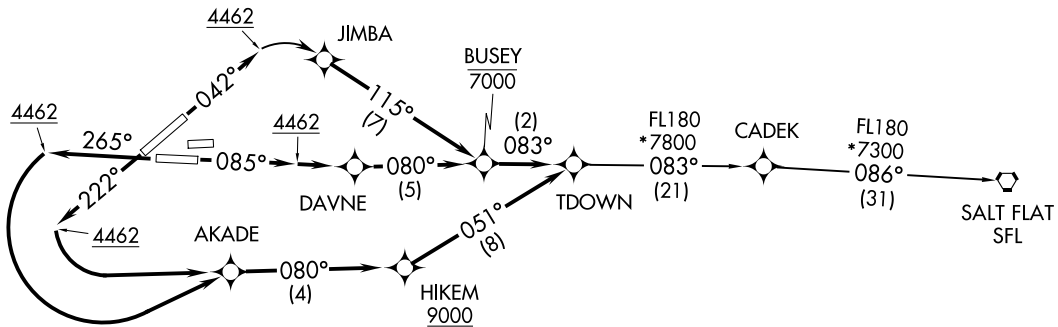
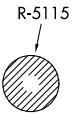
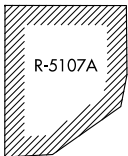


**TOP ALTITUDE:
ASSIGNED BY ATC**

- D-ATIS 120.0 254.3
- CLNC DEL 125.0 379.1
- GND CON 121.9 348.6
- EL PASO TOWER 118.3 239.275
- EL PASO DEP CON 119.15 263.0
- ABQ CENTER 135.875 292.15



TAKEOFF MINIMUMS

Rwys 4, 8R: Standard with a minimum climb of 500' per NM to 4462.
 Rwys 22, 26L: Standard with a minimum climb of 500' per NM to 9000.

- NOTE: DME/DME/IRU or GPS required.
- NOTE: RNAV 1.
- NOTE: For use by Turbojet aircraft only.
- NOTE: RADAR required for non-GPS equipped aircraft.

(NARRATIVE ON FOLLOWING PAGE)

NOTE: Chart not to scale.

TDOWN THREE DEPARTURE (RNAV)
(TDOWN3.TDOWN) 21JUL16

(TDOWN3.TDOWN) 22307
TDOWN THREE DEPARTURE (RNAV)

EL PASO, TEXAS
EL PASO INTL (EILP)

AL-134 (FAA)
EL PASO INTL (EILP)
EL PASO, TEXAS

TDOWN THREE DEPARTURE (RNAV)



DEPARTURE ROUTE DESCRIPTION

TAKEOFF RWY 4: Climb heading 042° to 4462, then right turn direct JIMBA, then on track 115° to cross BUSEY at or below 7000, then on track 083° to TDOWN. Thence

TAKEOFF RWY 8R: Climb heading 085° to 4462, then direct DAVNE, then on track 080° to cross BUSEY at or below 7000, then on track 083° to TDOWN. Thence

TAKEOFF RWY 22: Climb heading 222° to 4462, then left turn direct AKADE, then on track 080° to cross HIKEM at or above 9000, then on track 051° to TDOWN. Thence

TAKEOFF RWY 26L: Climb heading 265° to 4462, then left turn direct AKADE, then on track 080° to cross HIKEM at or above 9000, then on track 051° to TDOWN. Thence

. . . . on depicted route to SFL VORTAC.

SALT FLAT TRANSITION (TDOWN3.SFL)

SC-3, 14 MAY 2026 to 11 JUN 2026

SC-3, 14 MAY 2026 to 11 JUN 2026