

ILS or LOC RWY 35L

LOC I-JUS 111.55	APCH CRS 355°	Rwy Idg 9217
		TDZE 1307
		Arprt Elev 1307

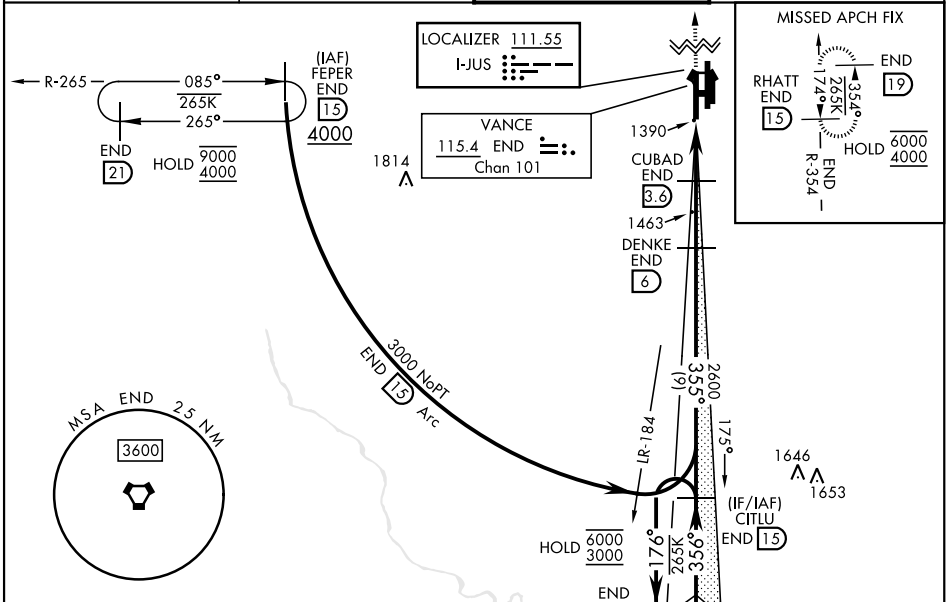
[USAF]

VANCE AFB (KEND)

▼ *When ALS inop, increase vis to 1 mile.
 **When ALS inop, increase CAT AB vis to 1 mile;
 CAT CDE vis to 1½ mile.

SALS (A2) ☐ ☐ ☐ MISSED APPROACH: Climb to 4000, intercept END VORTAC R-354 to RHATT and hold.

ATIS ★ 115.4 263.15	APP CON 125.45 343.625 (E) 126.75 346.325 (W)	TOWER ★ 124.05 259.1	GND CON 121.675 289.4
-------------------------------	---	--------------------------------	---------------------------------



EMERG SAFE ALT 100 NM 4500

ELEV 1307	TDZE 1307
-----------	-----------

HIRL Rwy 17C-35C, 17R-35L
 MIRL Rwy 17L-35R
 REIL Rwy 17L-35R

END (19) 6000
 3000
 176° → 356° → 355° → DENKE END (6) 2600
 CUBAD END (3.6) 1720
 END (2.4)
 GS 2.50° TCH 48
 2.3 NM → 2.4 NM
 4000 END R-354
 RHATT END (15)

CATEGORY	A	B	C	D	E
S-ILS 35L	1507-¾		200	(200-¾)	
S-LOC 35L*	1660-¾		353	(400-¾)	
CIRCLING	1760-1 453 (500-1)	1800-1½ 493 (500-1½)	1900-2 593 (600-2)	2400-3 1093 (1100-3)	

LOCAL ALTIMETER, WITHOUT LAST STEPDOWN FIX

S-LOC 35L**	1720-¾	413 (500-¾)	1720-1	413 (500-1)
CIRCLING	1760-1 453 (500-1)	1800-1½ 493 (500-1½)	1900-2 593 (600-2)	2400-3 1093 (1100-3)

FAF to MAP 4.7 NM					
Knots	60	90	120	150	180
Min:Sec	4:42	3:08	2:21	1:53	1:34

ILS or LOC RWY 35L

SC-1, 14 MAY 2026 to 11 JUN 2026

SC-1, 14 MAY 2026 to 11 JUN 2026