

ENID, OKLAHOMA

# RNAV (GPS) RWY 17L

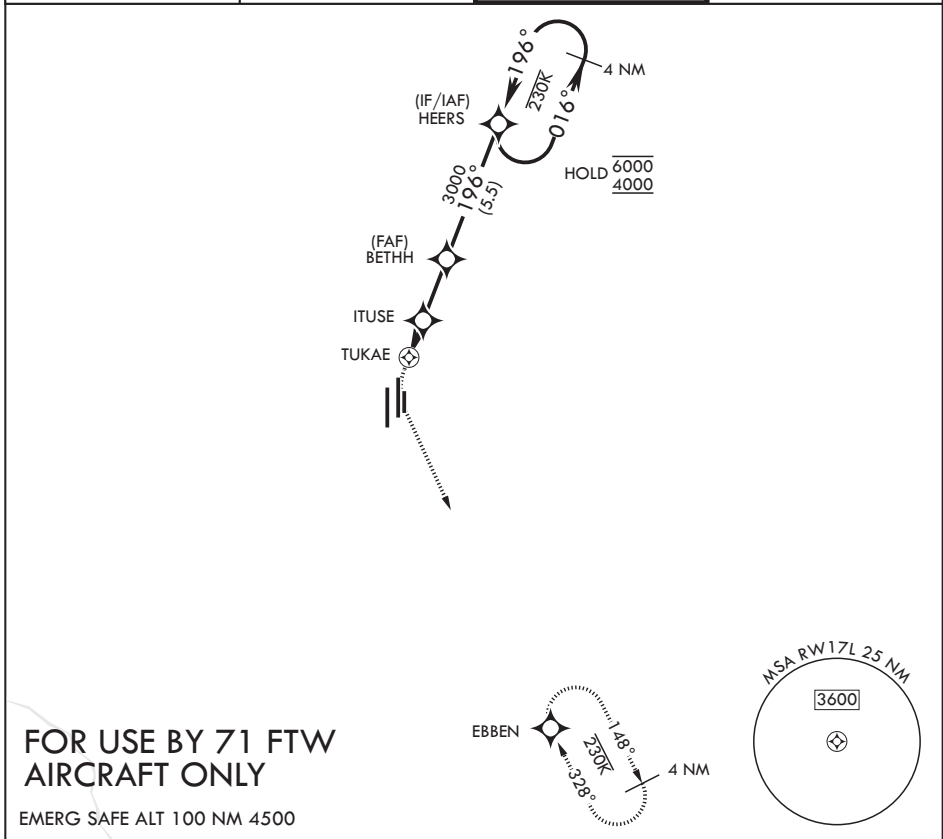
APCH CRS <b>196°</b>	Rwy Idg <b>5024</b>
	TDZE <b>1282</b>
	Arprt Elev <b>1307</b>

(USAF)

VANCE AFB (KEND)

RNP APCH	MISSED APPROACH: Climb to 1900 then climbing left turn to 4000 direct EBBEN and hold.
----------	---

ATIS★ <b>115.4 263.15</b>	APP CON <b>125.45 343.625 (E)</b> <b>126.75 346.325 (W)</b>	TOWER★ <b>124.05 259.1</b>	GND CON <b>121.675 289.4</b>
------------------------------	---	-------------------------------	---------------------------------



					ELEV 1307	TDZE 1282
CATEGORY	A	B	C	D		
RNAV MDA	1720-1½	438 (500-1½)	NA	NA	HIRL Rwys 17C-35C and 17R-35L	
CIRCLING	1760-1½	453 (500-1½)	NA	NA	MIRL Rwy 17L-35R	
					REL Rwys 17L and 35R	

ENID, OKLAHOMA  
Orig 24MAR22

36°20'N - 97°55'W

VANCE AFB (KEND)

# RNAV (GPS) RWY 17L

SC-1, 14 MAY 2026 to 11 JUN 2026

SC-1, 14 MAY 2026 to 11 JUN 2026