

ENID, OKLAHOMA

# RNAV (GPS) RWY 35R

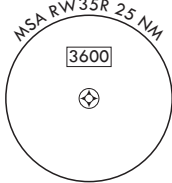
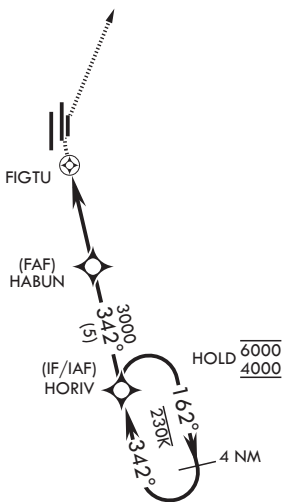
APCH CRS	Rwy Idg	5024
342°	TDZE	1284
	Arprt Elev	1307

(USAF)

VANCE AFB (KEND)

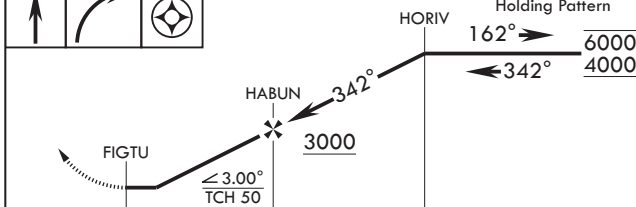
RNP APCH	MISSED APPROACH: Climb to 1900 then climbing right turn to 4000 direct KRMLN and hold.

ATIS★ 115.4 263.15	APP CON 125.45 343.625 (E) 126.75 346.325 (W)	TOWER★ 124.05 259.1	GND CON 121.675 289.4
-----------------------	---	------------------------	--------------------------



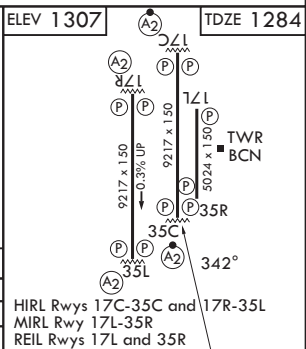
## FOR USE BY 71 FTW AIRCRAFT ONLY

EMERG SAFE ALT 100 NM 4500



ELEV 1307 TDZE 1284

CATEGORY	A	B	C	D
LNAV MDA	1720-1 <sup>3</sup> / <sub>8</sub>	436 (500-1 <sup>3</sup> / <sub>8</sub> )	NA	NA
CIRCLING	1760-1 <sup>3</sup> / <sub>8</sub>	453 (500-1 <sup>3</sup> / <sub>8</sub> )	NA	NA



ENID, OKLAHOMA  
Orig 24MAR22

36°20'N - 97°55'W

VANCE AFB (KEND)

# RNAV (GPS) RWY 35R

SC-1, 14 MAY 2026 to 11 JUN 2026

SC-1, 14 MAY 2026 to 11 JUN 2026