

ENID, OKLAHOMA

RNAV (GPS) Y RWY 35L

APCH CRS	Rwy ldg	9217
003°	THRE	1307
	Arpt Elev	1307

[USAF]

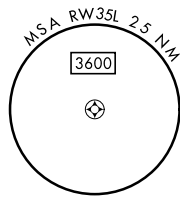
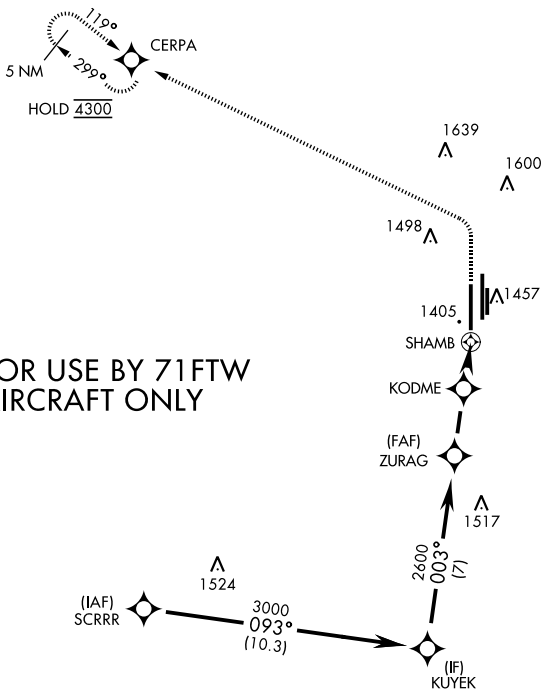
VANCE AFB (KEND)

RNP APCH - GPS	SALS
RADAR required	(A2)
* When ALS inop, increase vis to 1 mile. Circling visibility reduction by helicopters not authorized.	

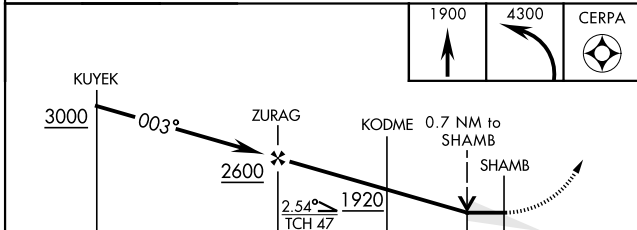
MISSED APPROACH: Climb to 1900, then climbing left turn to 4300 direct CERPA and hold.

ATIS ★	APP CON	TOWER ★	GND CON
115.4 263.15	125.45 343.625 (E) 126.75 346.325 (W)	124.05 259.1	121.675 289.4

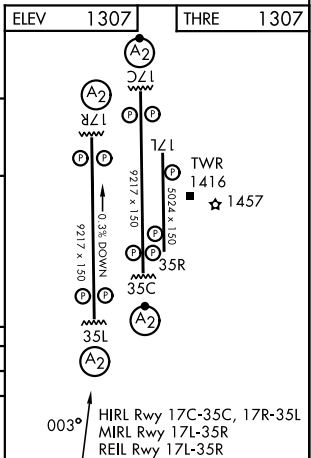
FOR USE BY 71FTW AIRCRAFT ONLY



EMERG SAFE ALT 100 NM 4500



CATEGORY	A	B	C	D	E
RNAV MDA *		1660 - 3/4	353	(400 - 3/4)	
CIRCLING	1760-1	453 (500-1)	1800-1 1/2 493 (500-1 1/2)	1900-2 593 (600-2)	2400-3 1093 (1100-3)



ENID, OKLAHOMA
Amdt 6 12JUN25

36°20'N-97°55'W

VANCE AFB (KEND)

RNAV (GPS) Y RWY 35L

SC-1, 14 MAY 2026 to 11 JUN 2026

SC-1, 14 MAY 2026 to 11 JUN 2026