

ENID, OKLAHOMA

VOR/DME RWY 17L

VORTAC END 115.4 Chan 101	APCH CRS 196°	Rwy Idg TDZE 1282 Arpt Elev 1307
---	-------------------------	--

[USAF]

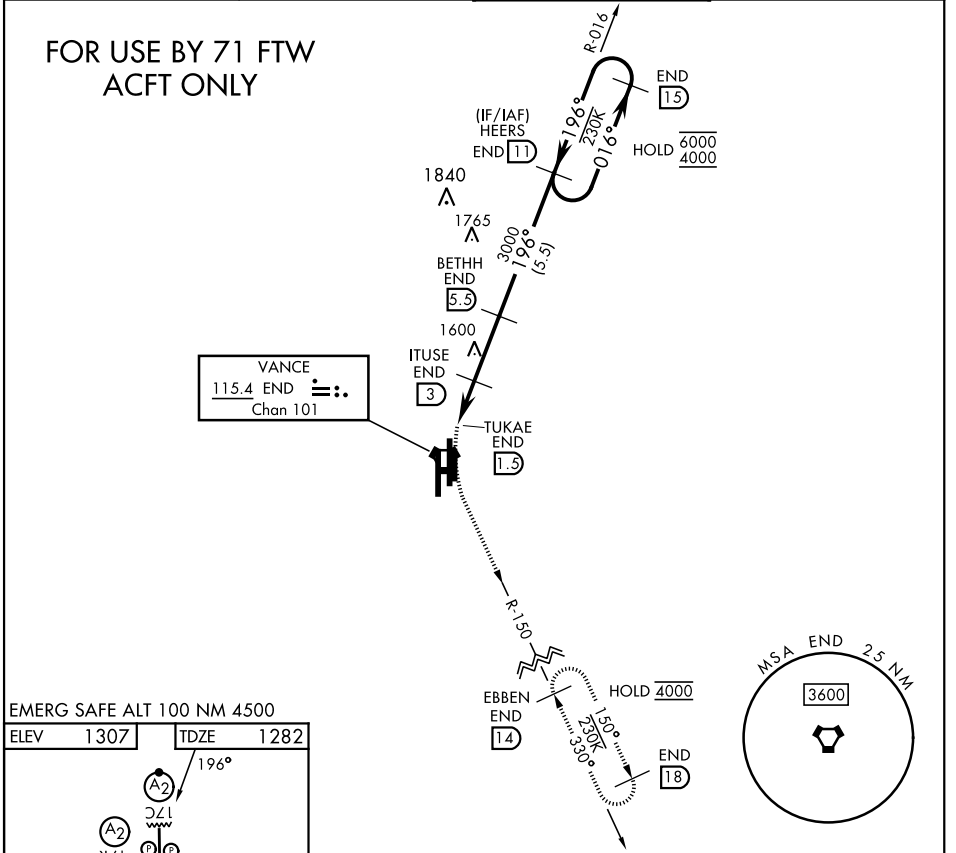
VANCE AFB (KEND)

ATIS ★ 115.4 263.15		APP CON 125.45 343.625 (E) 126.75 346.325 (W)	TOWER ★ 124.05 259.1	GND CON 121.675 289.4
--------------------------------------	--	--	---------------------------------------	--

MISSED APPROACH: Climbing left turn to 4000 on heading 165°, intercept END VORTAC R-150 to EBBEN and hold.

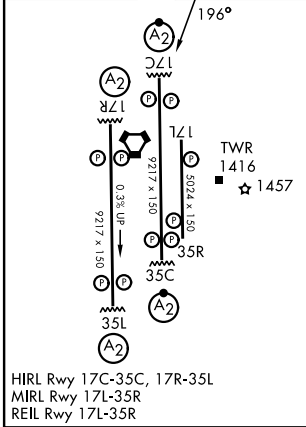
**FOR USE BY 71 FTW
ACFT ONLY**

VANCE
115.4 END
Chan 101



EMERG SAFE ALT 100 NM 4500

ELEV 1307	TDZE 1282
-----------	-----------



HIRL Rwy 17C-35C, 17R-35L
MIRL Rwy 17L-35R
REIL Rwy 17L-35R

4000 hdg 165°	↑ END R-150	EBBEN END 14	VGSi and descent angles not coincident (VGSi Angle 3.00/TCH 54).	
END VORTAC	TUKAE END 1.5	ITUSE END 3	BETHH END 5.3	HEERS END 11
				END 15
				6000 4000
				016°
				196°
				3000
				2200
				3.02° TCH 40
				1.3
				1.5 NM
				2.5 NM
CATEGORY	A	B	C	D
S-17L	1720-1½	438 (500-1½)	NA	
CIRCLING	1760-1½	453 (500-1½)	NA	

ENID, OKLAHOMA
Orig 24MAR22

36°20'N-97°55'W

VANCE AFB (KEND)

VOR/DME RWY 17L

SC-1, 14 MAY 2026 to 11 JUN 2026

SC-1, 14 MAY 2026 to 11 JUN 2026