

ENID, OKLAHOMA

VOR/DME RWY 35R

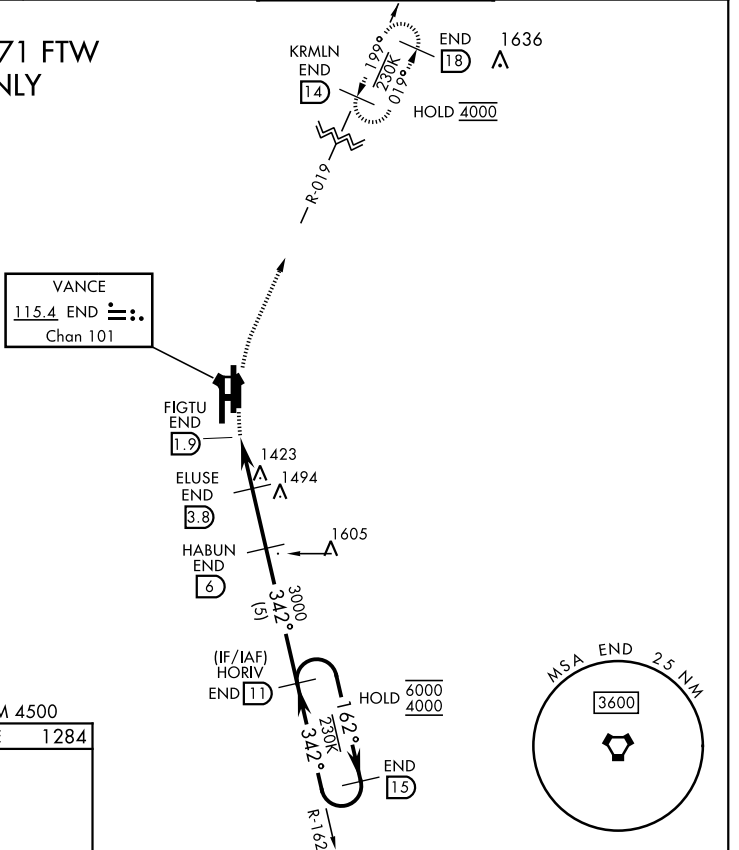
VORTAC END 115.4 Chan 101	APCH CRS 342°	Rwy Idg 5024 TDZE 1284 Arprt Elev 1307
---	-------------------------	--

[USAF]

VANCE AFB (KEND)

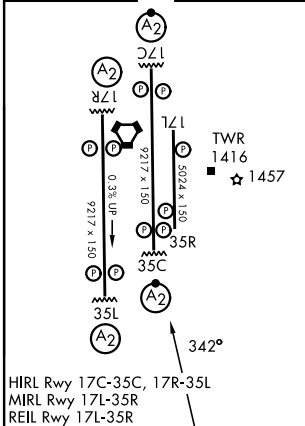
<p>Visibility reduction by helicopters not authorized.</p>		<p>MISSED APPROACH: Climbing right turn to 4000 on heading 005°, intercept END VORTAC R-019 to KRMLN and hold.</p>	
<p>ATIS ★ 115.4 263.15</p>	<p>APP CON 125.45 343.625 (E) 126.75 346.325 (W)</p>	<p>TOWER ★ 124.05 259.1</p>	<p>GND CON 121.675 289.4</p>

FOR USE BY 71 FTW ACFT ONLY



EMERG SAFE ALT 100 NM 4500

ELEV 1307	TDZE 1284
-----------	-----------



HIRL Rwy 17C-35C, 17R-35L
MIRL Rwy 17L-35R
REIL Rwy 17L-35R

4000	↑ END R-019	KRMLN END 14	VGSIs and descent angles not coincident (VGSi Angle 3.00/TCH 50).			
END VORTAC	FIGTU END 1.9	ELUSE END 3.8	HABUN END 6	HORV END 11	END 15	
2280			3000	6000	4000	
1.1			1.9 NM		2.2 NM	
CATEGORY	A	B	C	D		
S-35R	1720-1 $\frac{3}{8}$	436 (500-1 $\frac{3}{8}$)	NA			
CIRCLING	1760-1 $\frac{3}{8}$	453 (500-1 $\frac{3}{8}$)	NA			

ENID, OKLAHOMA

36°20'N-97°55'W

VANCE AFB (KEND)

Orig 24MAR22

VOR/DME RWY 35R

SC-1, 14 MAY 2026 to 11 JUN 2026

SC-1, 14 MAY 2026 to 11 JUN 2026