

WAAS CH 50213 W17A	APP CRS 175°	Rwy Ldg TDZE 1165 Apt Elev 1167
--	------------------------	---

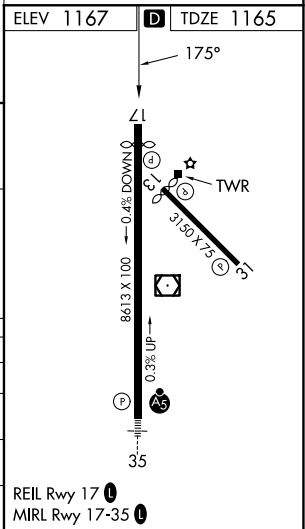
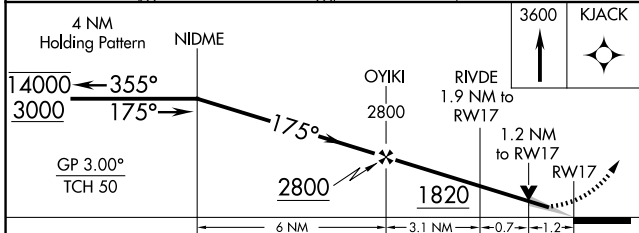
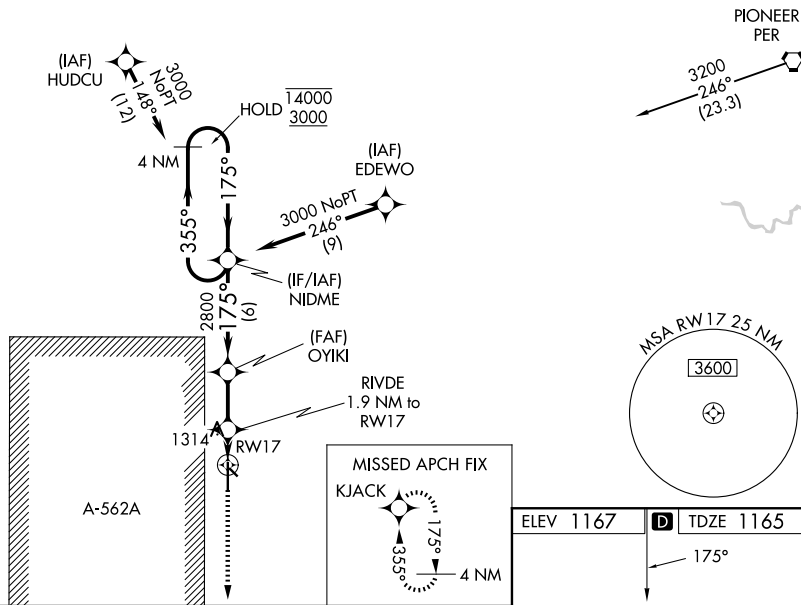
RNAV (GPS) RWY 17

ENID WOODRING RGNL (WDG)

RNP APCH-GPS.		MISSED APPROACH: Climb to 3600 direct KJACK and hold.
<p>⚠ Circling Rwy 13 NA at night. For uncompensated Baro-VNAV systems, LNAV/VNAV NA below -17°C or above 54°C.</p>		

AWOS-3PT 123.725	VANCE APP CON ★ 121.3 346.325	WOODRING TOWER ★ 118.9 (CTAF) 0 257.95	GND CON 121.925
----------------------------	---	--	---------------------------

Procedure NA for arrival on PER VORTAC
airway radials 173 CW 335.



CATEGORY	A	B	C	D	E
LPV DA	1415-3/4		250 (300-3/4)		
LNAV/VNAV DA	1415-3/4		250 (300-3/4)		
LNAV MDA	1580-1	415 (500-1)	1580-1 1/8	415 (500-1 1/8)	
CIRCLING	1760-1	593 (600-1)	1820-1 3/4 653 (700-1 3/4)	1880-2 1/4 713 (800-2 1/4)	2000-3 833 (900-3)

SC-1, 14 MAY 2026 to 11 JUN 2026

SC-1, 14 MAY 2026 to 11 JUN 2026