

WAAS CH <b>87147</b> <b>W31A</b>	APP CRS <b>310°</b>	Rwy Ldg TDZE Apt Elev	<b>3038</b> <b>1159</b> <b>1167</b>
--	------------------------	-----------------------------	---

# RNAV (GPS) RWY 31

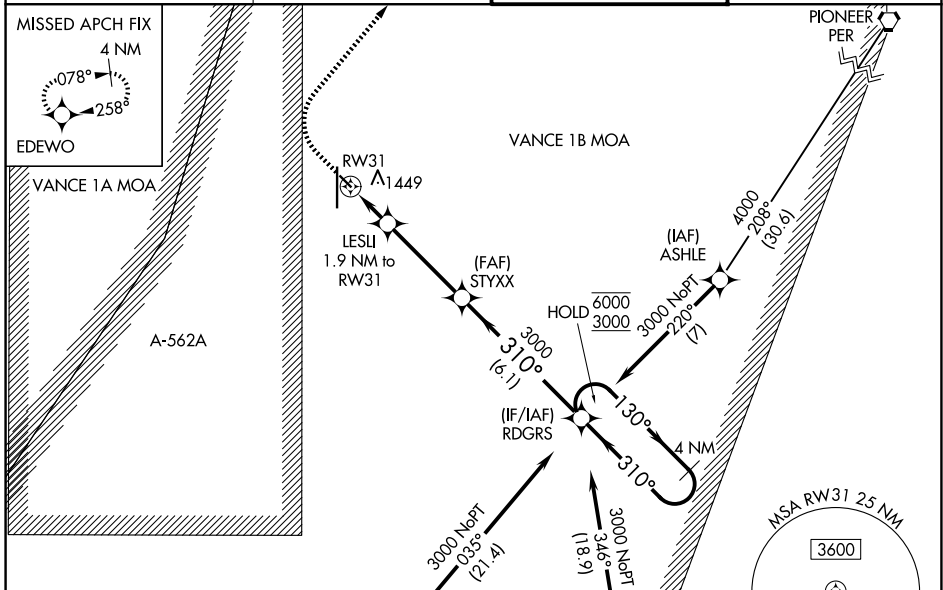
ENID WOODRING RGNL (WDG)

RNP APCH - GPS.

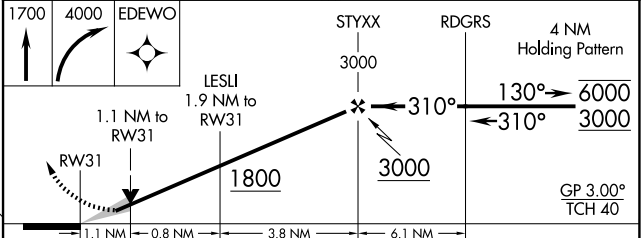
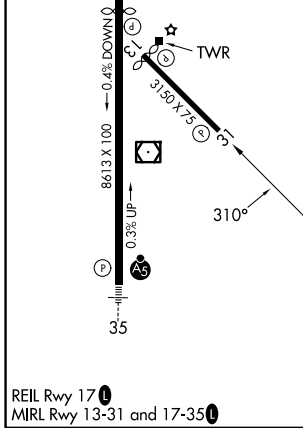
⚠ For uncompensated Baro-VNAV systems, LNAV/VNAV NA below -17°C or above 54°C. Baro-VNAV and VDP NA when using GOK altimeter setting. When local altimeter setting not received, use GOK altimeter setting and increase LPV DA to 1507 feet and all visibilities ¼ SM. Increase LNAV/VNAV DA to 1707 feet and all visibilities ¼ SM. Increase all MDAs 100 feet and LNAV visibility Cat C ¼ SM, and Circling visibility Cat C ½ SM.

MISSED APPROACH: Climb to 1700 then climbing right turn to 4000 direct EDEWO and hold.

AWOS-3PT <b>123.725</b>	VANCE APP CON * <b>121.3 346.325</b>	WOODRING TOWER * <b>118.9 (CTAF) 257.95</b>	GND CON <b>121.925</b>
----------------------------	---	--	---------------------------



ELEV 1167	<b>D</b>	TDZE 1159
-----------	----------	-----------



CATEGORY	A	B	C	D
LPV DA	1409-¾	250 (300-¾)		NA
LNAV/VNAV DA	1609-1⅓	450 (500-1⅓)		NA
LNAV MDA	1560-1	401 (400-1)	1560-1⅛ 401 (400-1⅛)	NA
CIRCLING	1760-1	593 (600-1)	1820-1¾ 653 (700-1¾)	NA

SC-1, 14 MAY 2026 to 11 JUN 2026

SC-1, 14 MAY 2026 to 11 JUN 2026