


| | | |
|--|------------------------|---|
| WAAS CH 97413 W35A | APP CRS 355° | Rwy Ldg 8002 TDZE 1147 Apt Elev 1167 |
|--|------------------------|---|

RNAV (GPS) RWY 35

ENID WOODRING RGNL (WDG)

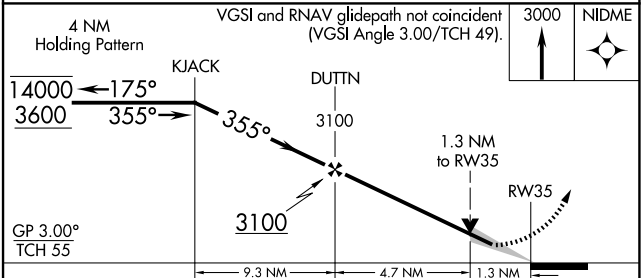
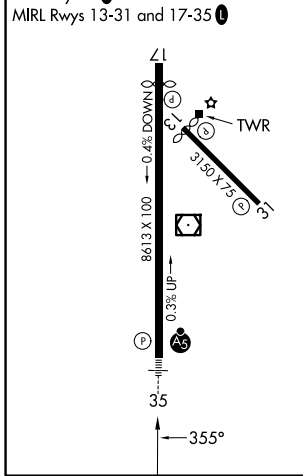
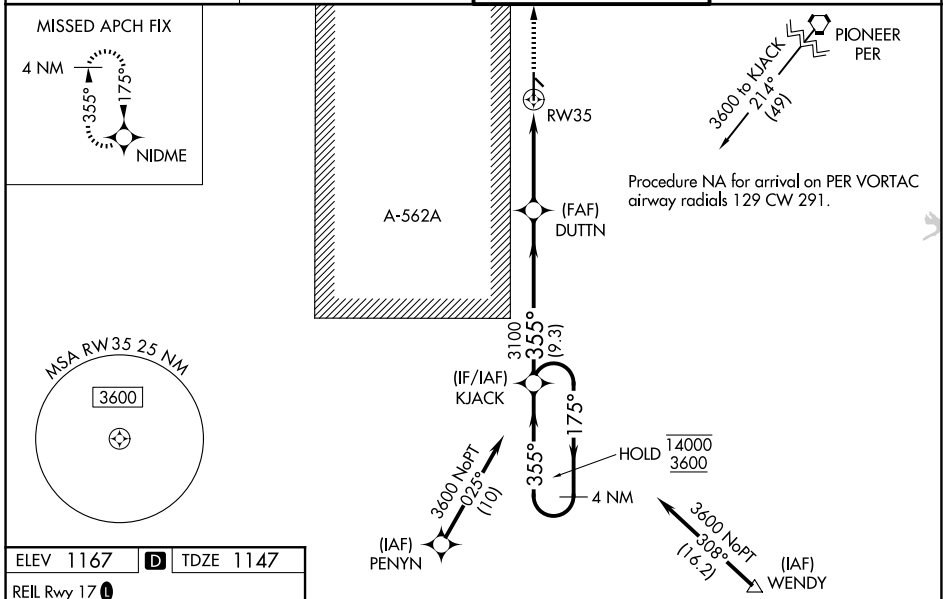
RNP APCH-GPS.

⚠ For uncompensated Baro-VNAV systems, LNAV/VNAV NA below -17°C or above 54°C. Baro-VNAV and VDP NA when using GOK altimeter setting. Circling Rwy 13 NA at night. When local altimeter setting not received, use GOK altimeter setting and increase LPV DA to 1445 feet; increase LNAV/VNAV DA to 1495 feet and all visibilities ½ SM. Increase all MDAs 100 feet and LNAV visibility Cat C/D/E ¼ SM, and Circling visibility Cat C/D ½ SM. For inop ALS, increase LPV Cat E visibility to ¾ SM, increase LNAV/VNAV all Cats visibility to ¾ SM, and increase LNAV Cat E visibility to 1 ⅜ SM.

MALSRL 

MISSED APPROACH: Climb to 3000 direct NIDME and hold.

| | | | |
|----------------------------|---|--|---------------------------|
| AWOS-3PT 123.725 | VANCE APP CON * 121.3 346.325 | WOODRING TOWER * 118.9 (CTAF) 0 257.95 | GND CON 121.925 |
|----------------------------|---|--|---------------------------|



| CATEGORY | A | B | C | D | E |
|--------------|--------|-------------|-------------------------|-------------------------|-----------------------|
| LPV DA | 1347-½ | | 200 (200-½) | | |
| LNAV/VNAV DA | 1397-½ | | 250 (300-½) | | |
| LNAV MDA | 1600-½ | 453 (500-½) | 1600-7/8 | | 453 (500-7/8) |
| CIRCLING | 1760-1 | 593 (600-1) | 1820-1¾ 653 (700-1¾) | 1880-2¼ 713 (800-2¼) | 2000-3 833 (900-3) |

SC-1, 14 MAY 2026 to 11 JUN 2026

SC-1, 14 MAY 2026 to 11 JUN 2026