

WAAS CH <b>82308</b> W21A	APP CRS <b>207°</b>	Rwy Ldg TDZE Apt Elev	<b>5500</b> <b>1276</b> <b>1276</b>
---------------------------------	------------------------	-----------------------------	---

# RNAV (GPS) RWY 21

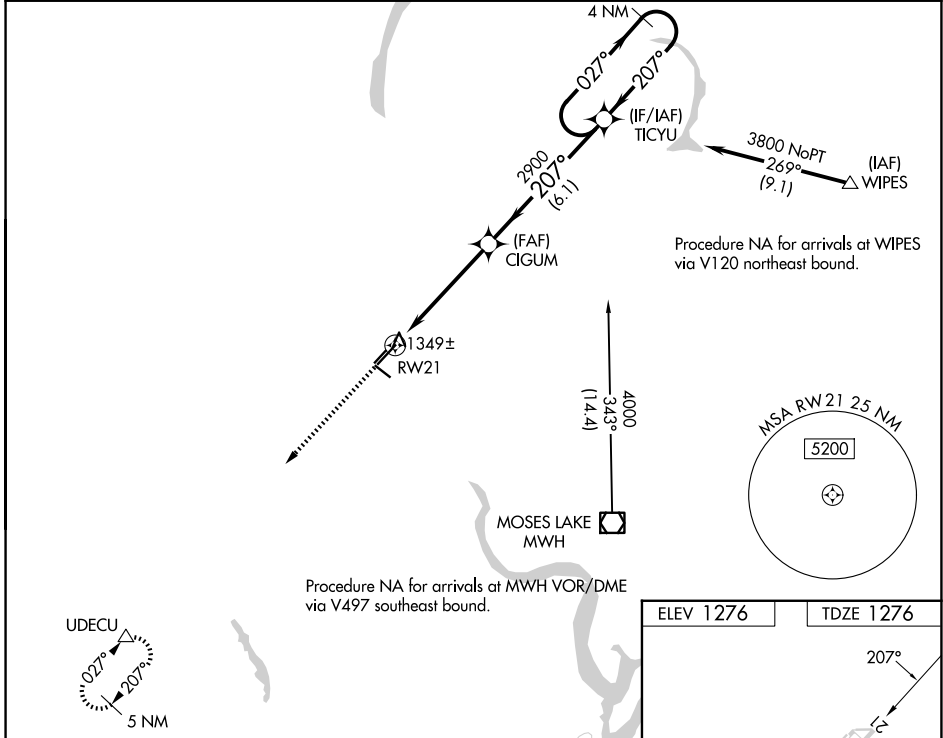
EPHRATA MUNI (EPH)

RNP APCH.

▼ For uncompensated Baro-VNAV systems, LNAV/VNAV NA below -17°C or above 46°C. VDP and Baro-VNAV NA when using Moses Lake/Grant County Intl altimeter setting. When local altimeter setting not received, use Moses Lake/Grant County Intl altimeter setting and increase all DA/MDA 40 feet; increase visibility LPV all Cats, and LNAV Cats C and D ¼ SM.

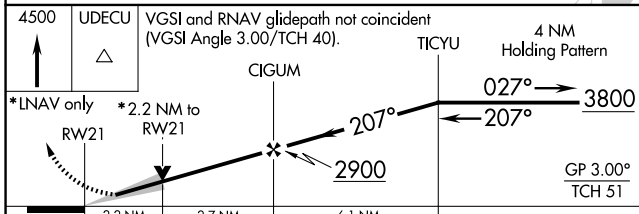
MISSED APPROACH: Climb to 4500 direct UDECU and hold.

ASOS <b>135.775</b>	GRANT COUNTY APP CON * <b>126.4 379.95</b>	UNICOM <b>122.8 (CTAF) 0</b>
------------------------	---	---------------------------------

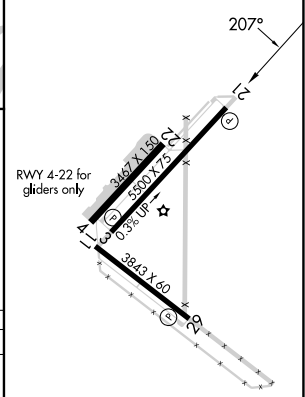


NW-1, 14 MAY 2026 to 11 JUN 2026

NW-1, 14 MAY 2026 to 11 JUN 2026



ELEV 1276	TDZE 1276
-----------	-----------



CATEGORY	A	B	C	D
LPV DA		1526-¾	250 (300-¾)	
LNNAV/VNAV DA		2171-4	895 (900-4)	
LNNAV MDA	2020-1 744 (800-1)	2020-1¼ 744 (800-1¼)	2020-2¼ 744 (800-2¼)	2020-2½ 744 (800-2½)

REIL Rwy 3, 11, 21 and 29 0  
MIRL Rwy 11-29 and 3-21 0