

WAAS CH 50208 W03A	APP CRS 027°	Rwy Ldg TDZE Apt Elev	5500 1269 1276
--	------------------------	-----------------------------	---

RNAV (GPS) RWY 3

EPHRATA MUNI (EPH)

RNP APCH.

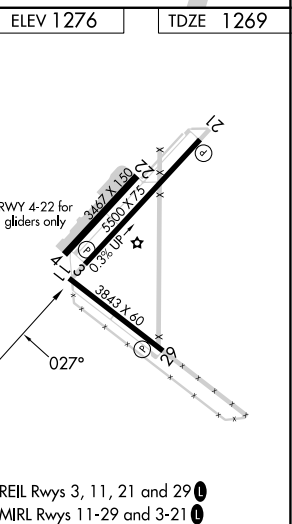
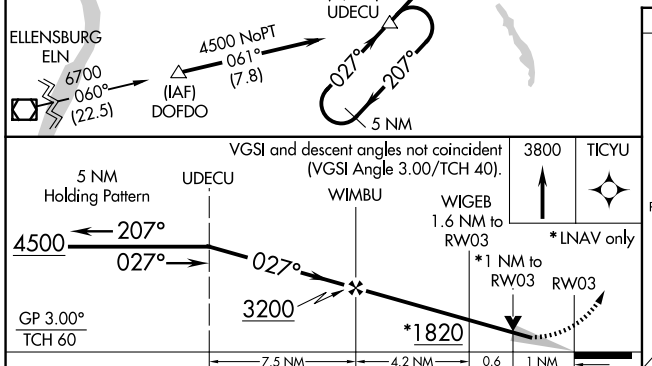
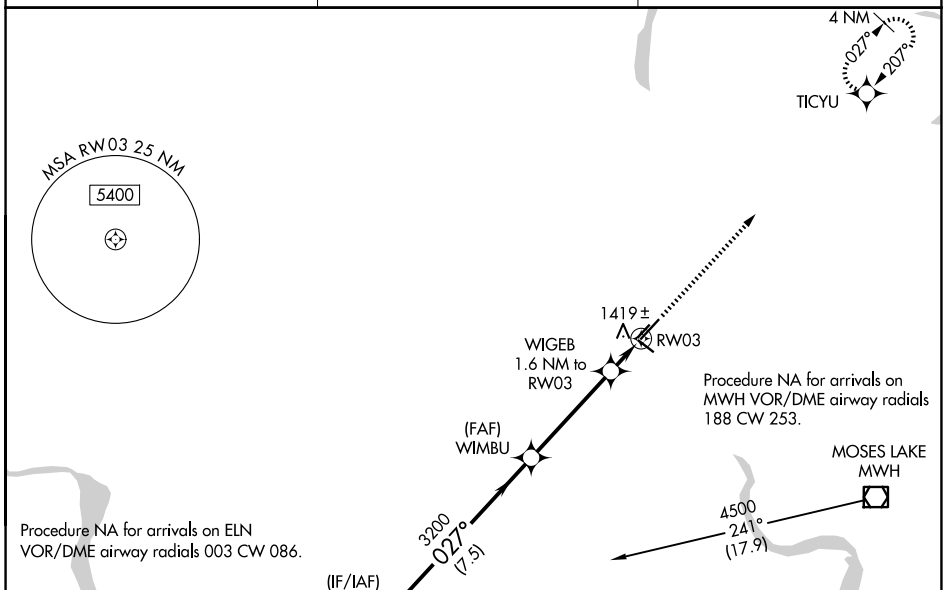
⚠ For uncompensated Baro-VNAV systems, LNAV/VNAV NA below -17°C or above 46°C. VDP and Baro-VNAV NA when using Moses Lake/Grant County Intl altimeter setting. When local altimeter setting not received, use Moses Lake/Grant County Intl altimeter setting and increase all DA/MDA 40 feet and LNAV Cat C and D visibility ¼ SM.

MISSED APPROACH: Climb to 3800 direct TICYU and hold.

ASOS
135.775

GRANT COUNTY APP CON *
126.4 379.95

UNICOM
122.8 (CTAF) 0



CATEGORY	A	B	C	D
LPV DA		1519-1	250 (300-1)	
LNAV/VNAV DA		1689-1½	420 (500-1½)	
LNAV MDA	1680-1 411 (500-1)		1680-1¼ 411 (500-1¼)	

NW-1, 14 MAY 2026 to 11 JUN 2026

NW-1, 14 MAY 2026 to 11 JUN 2026