

VORTAC EPH 112.6 Chan 73	APP CRS 202°	Rwy Ldg TDZE 1276 Apt Elev 1276
--	------------------------	---

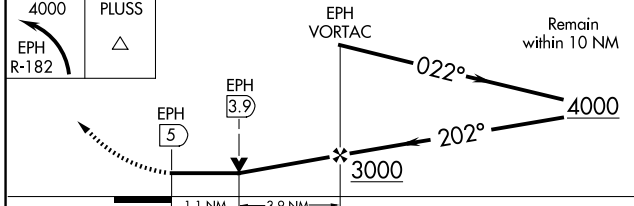
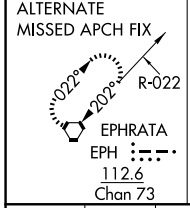
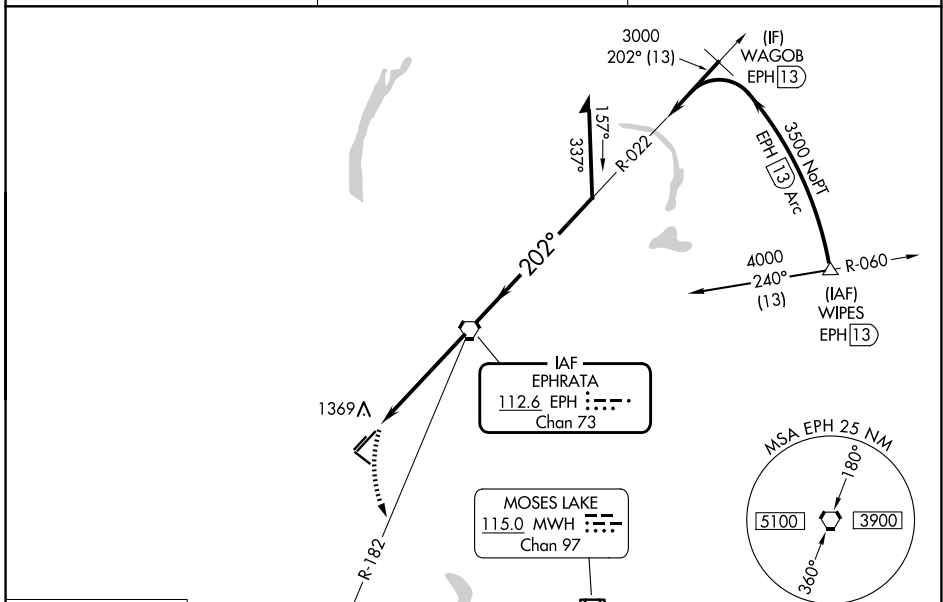
VOR RWY 21

EPHRATA MUNI (EPH)

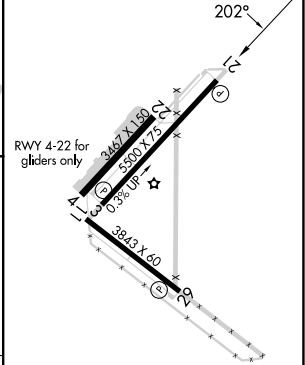
⚠ When local altimeter setting not received, use Moses Lake/Grant County Intl altimeter setting and increase all MDA 40 feet, increase S-21 Cat D visibility ¼ mile. VDP NA when using Moses Lake/Grant County Intl altimeter setting. Final approach from EPH VORTAC holding pattern not authorized. Procedure turn required. Circling NA for Cats B, C and D northwest of Rwy 03-21.

MISSED APPROACH: Climbing left turn to 4000 via EPH R-182 to PLUS5 INT/EPH 13.3 DME and hold. Continue climb-in-hold to 4000.

ASOS 135.775	GRANT COUNTY APP CON* 126.4 379.95	UNICOM 122.8 (CTAF)
------------------------	--	-------------------------------



ELEV 1276	TDZE 1276
-----------	-----------



CATEGORY	A	B	C	D
S-21	1680-1	404 (500-1)	1680-1¼	404 (500-1¼)
CIRCLING	1740-1 464 (500-1)	1740-1 464 (500-1)	1780-1½ 504 (600-1½)	2500-3 1224 (1300-3)

MIRL Rwy 11-29 and 3-21	
REIL Rwy 3, 11, 21 and 29	
FAF to MAP 5 NM	
Knots	60 90 120 150 180
Min:Sec	5:00 3:20 2:30 2:00 1:40

NW-1, 14 MAY 2026 to 11 JUN 2026

NW-1, 14 MAY 2026 to 11 JUN 2026