

WAAS CH 86812 W24A	APP CRS 245°	Rwy Ldg 7500 TDZE 730 Apt Elev 732
--	------------------------	---


RNAV (GPS) RWY 24

ERIE INTL/TOM RIDGE FLD (ERI)

RNP APCH - GPS.

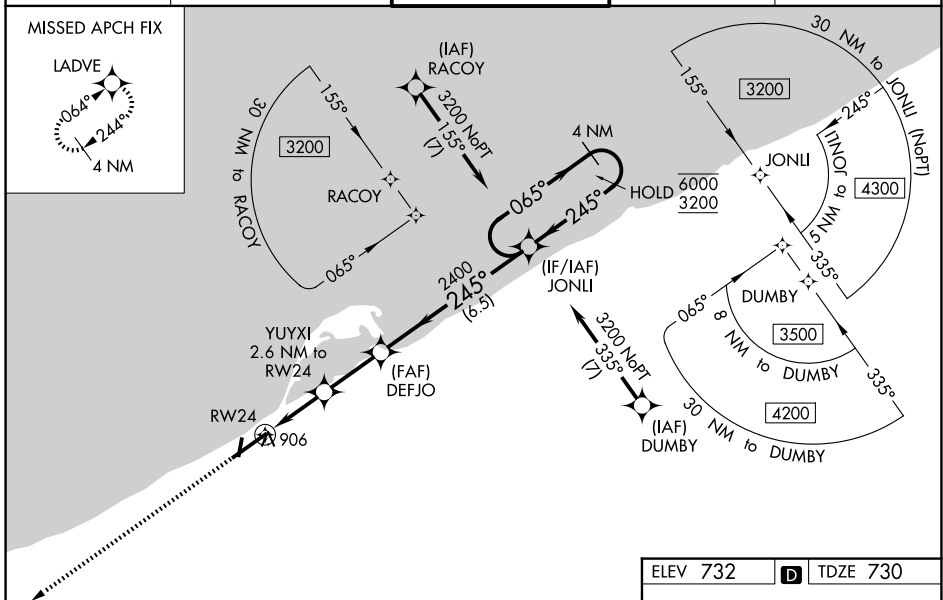
⚠ Circling to Rwy 2 and 20 NA at night. Circling NA southeast of Rwy 6-24.
⚠ For uncompensated Baro-VNAV systems, LNAV/VNAV NA below -15°C or above 54°C. For inop ALS increase LNAV/VNAV all Cats visibility to RVR 6000.

MALSR



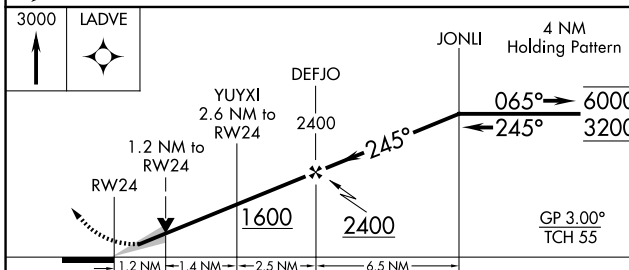
MISSED APPROACH:
Climb to 3000 direct LADVE and hold.

ATIS 120.35	BUFFALO APP CON * 121.0 257.8	ERIE TOWER * 118.1 (CTAF) 0 257.8	GND CON 121.9	UNICOM 122.95
-----------------------	---	---	-------------------------	-------------------------



NE-4, 14 MAY 2026 to 11 JUN 2026

NE-4, 14 MAY 2026 to 11 JUN 2026



ELEV 732 **D** TDZE 730

This diagram shows the runway and taxiway layout for RWY 24. Key features include:

- RWY 24**: Runway length 8420 x 150.
- TWR**: Tower at 03500 x 150.
- ALS**: Approach Light System.
- MALSR**: MALSR at 03500 x 150.
- Headings: 245°.

CATEGORY	A	B	C	D
LPV DA		942/24	212 (300-½)	
LNAV/VNAV DA		1146/40	416 (500-¾)	
LNAV MDA	1160/24	430 (500-½)	1160/40	430 (500-¾)
CIRCLING	1160-1 428 (500-1)	1200-1 468 (500-1)	1200-1½ 468 (500-½)	1340-2 608 (700-2)

HIRL Rwy 6-24 **1**
MIRL Rwy 2-20 **1**