

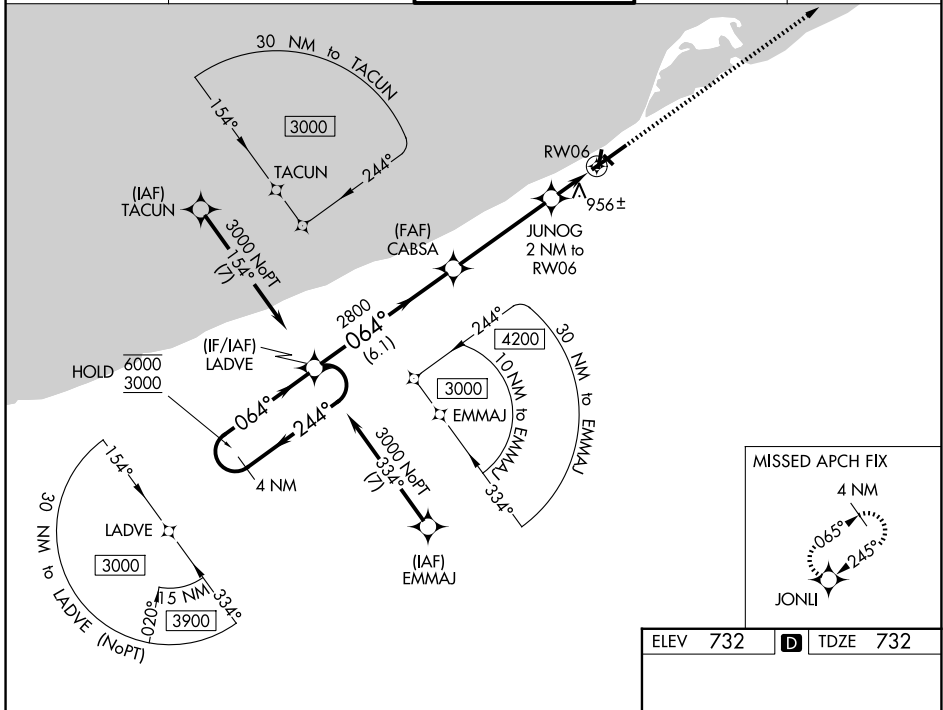
WAAS CH 77612 W06A	APP CRS 064°	Rwy Ldg 7501 TDZE 732 Apt Elev 732
--	------------------------	---

RNAV (GPS) RWY 6

ERIE INTL/TOM RIDGE FLD (ERI)

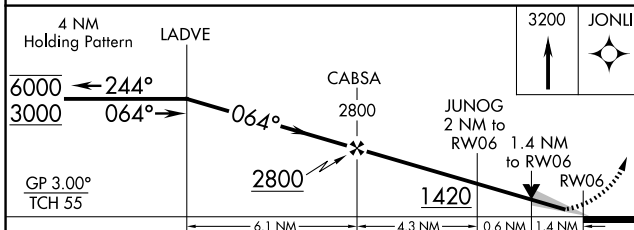
RNP APCH - GPS.	MALS	MISSED APPROACH: Climb to 3200 direct JONLI and hold.
<p>Circling NA southeast of Rwy 6-24. Circling Rwy 2, 20 NA at night. For uncompensated Baro-VNAV systems, LNAV/VNAV NA below -15°C or above 54°C. For inop ALS, increase LNAV Cats C and D visibility to 1 1/2 SM.</p>		

ATIS 120.35	BUFFALO APP CON* 121.0 257.8	ERIE TOWER* 118.1 (CTAF) 0 257.8	GND CON 121.9	UNICOM 122.95
-----------------------	--	--	-------------------------	-------------------------

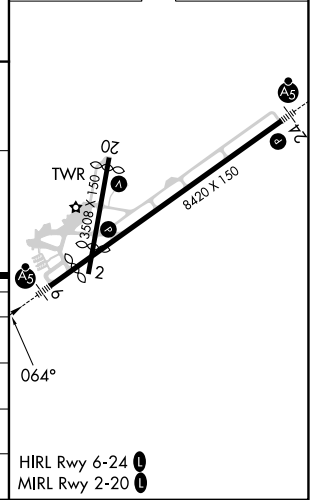


NE-4, 14 MAY 2026 to 11 JUN 2026

NE-4, 14 MAY 2026 to 11 JUN 2026



ELEV 732	D TDZE 732
----------	-------------------



CATEGORY	A	B	C	D
LPV DA		982/24	250 (300-1/2)	
LNAV/VNAV DA		1256/55	524 (600-1)	
LNAV MDA	1220/24	488 (500-1/2)	1220/50	488 (500-1)
CIRCLING	1220-1	488 (500-1)	1220-1 1/2 488 (500-1 1/2)	1340-2 608 (700-2)

HIRL Rwy 6-24
MIRL Rwy 2-20