

LOC/DME I-EUG 110.1 Chan 38	APP CRS 164°	Rwy Ldg 8009	TDZE 364	Apt Elev 374
---	------------------------	------------------------	--------------------	------------------------

ILS RWY 16R (CAT II & III)

MAHLON SWEET FLD (EUG)

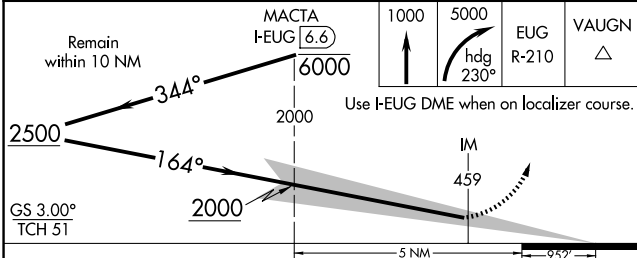
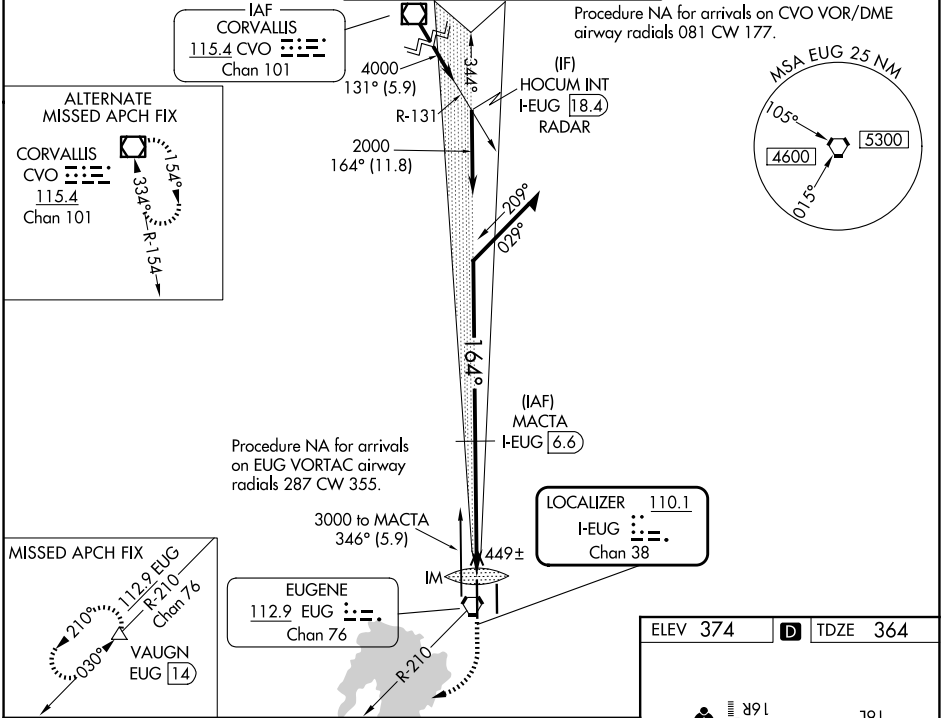
DME required.

Simultaneous approach authorized. Cat II RVR 1000 authorized with specific OPSPEC, MSPEC, or LOA approval and use of autoland or HUD to touchdown. Cat II and III minimums NA when control tower closed.

ALSF-2

MISSED APPROACH: Climb to 1000 then climbing right turn to 5000 on heading 230° and on EUG VORTAC R-210 to VAUGN/EUG 14 DME and hold, continue climb-in-hold to 5000.

ATIS 125.225	CASCADE APP CON* 119.6 348.7	EUGENE TOWER* 118.9 (CTAF) 371.9 (16R/34L) 124.15 371.9 (16L/34R)	GND CON 121.7 269.5	UNICOM 122.95
------------------------	--	--	-------------------------------	-------------------------



ELEV 374	TDZE 364
1691	191
8000' X 1.50'	6000' X 1.05'
34L	34R
TWR	
TDZL/RCLS Rwy 16R REIL Rwy 34R HIRL Rwy 16L-34R and 16R-34L	

CATEGORY	A	B	C	D
S-ILS 16R	CAT II RA 108/12 100 DA 464			
S-ILS 16R	CAT III RVR 06			
CATEGORY II & III ILS - SPECIAL AIRCREW & AIRCRAFT CERTIFICATION REQUIRED				

NW-1, 14 MAY 2026 to 11 JUN 2026

NW-1, 14 MAY 2026 to 11 JUN 2026