

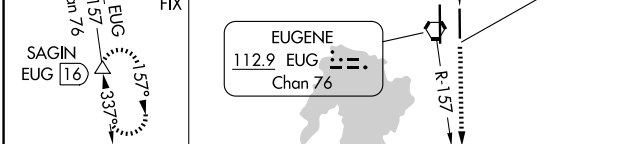
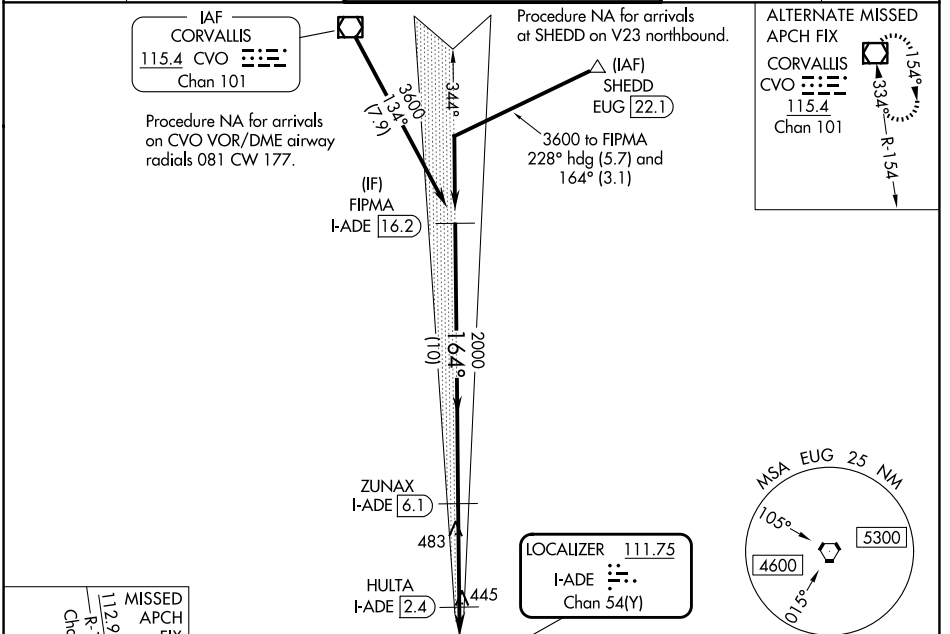
LOC/DME I-ADE 111.75 Chan 54 (Y)	APP CRS 164°	Rwy Ldg TDZE Apt Elev 6000 369 374
---	------------------------	--

ILS or LOC RWY 16L

MAHLON SWEET FLD (EUG)

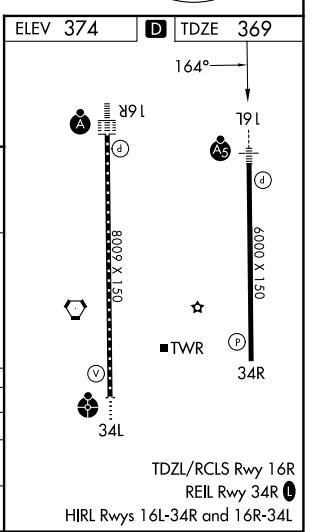
DME required.	MALSR	MISSED APPROACH: Climb to 5500 on heading 164° and EUG VORTAC R-157 to SAGIN/EUG 16 DME and hold, continue climb-in-hold to 5500.
Simultaneous approach authorized.		

ATIS 125.225	CASCADE APP CON* 119.6 348.7	EUGENE TOWER* 118.9 (CTAF) 371.9 (16R/34L) 124.15 371.9 (16L/34R)	GND CON 121.7 269.5	UNICOM 122.95
------------------------	--	--	-------------------------------	-------------------------



FIPMA I-ADE 16.2	ZUNAX I-ADE 6.1	HULTA I-ADE 2.4	EUG R-157	SAGIN
3600	2000	2000	820	
*LOC only				

CATEGORY	A	B	C	D
S-ILS 16L		569-1/2	200 (200-1/2)	
S-LOC 16L		700-1/2	331 (400-1/2)	
CIRCLING	820-1 446 (500-1)	840-1 466 (500-1)	1000-1 3/4 626 (700-1 3/4)	1140-2 1/2 766 (800-2 1/2)



NW-1, 14 MAY 2026 to 11 JUN 2026

NW-1, 14 MAY 2026 to 11 JUN 2026