

APP CRS	Rwy Ldg	<b>8009</b>
<b>344°</b>	TDZE	<b>368</b>
	Apt Elev	<b>374</b>

# RNAV (RNP) Z RWY 34L

MAHLON SWEET FLD (EUG)

RNP AR APCH - GPS.		ODALS	MISSED APPROACH: Climb to 1500, then climbing left turn to 4000 direct VAUGN and hold.
<p>Simultaneous approach authorized. For uncompensated Baro-VNAV systems, procedure NA below -6°C or above 54°C. For inop ALS, increase RNP 0.20 all Cats visibility to RVR 5500; increase RNP 0.30 Cats A, B visibility to RVR 6000.</p>			

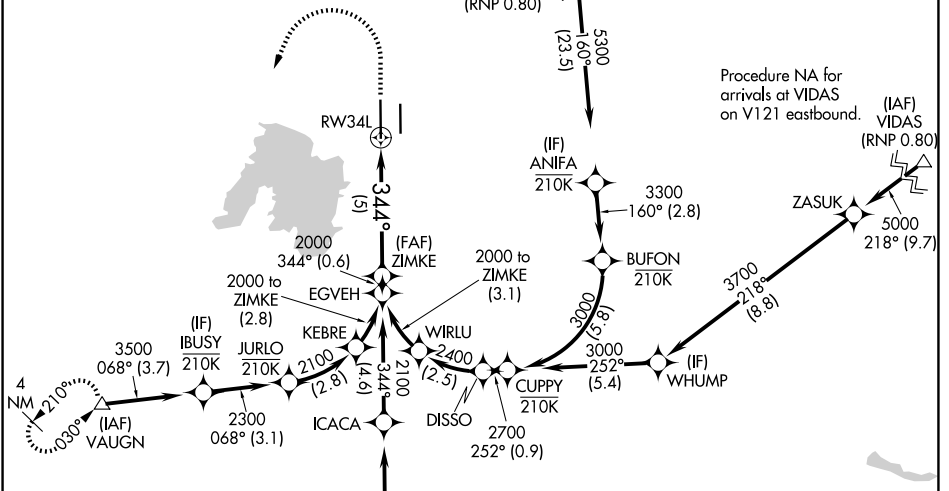
ATIS <b>125.225</b>	CASCADE APP CON* <b>119.6 348.7</b>	EUGENE TOWER* <b>118.9 (CTAF) 371.9 (16R/34L)</b> <b>124.15 371.9 (16L/34R)</b>	GND CON <b>121.7 269.5</b>	UNICOM <b>122.95</b>
------------------------	--	---	-------------------------------	-------------------------

Procedure NA for arrivals at SHEDD on V23 northbound and on V536 northwest bound.

(IAF) SHEDD (RNP 0.80)

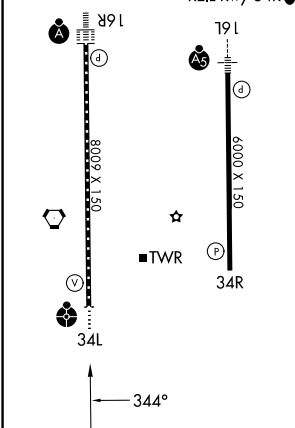
Procedure NA for arrivals at VIDAS on V121 eastbound.

(IAF) VIDAS (RNP 0.80)

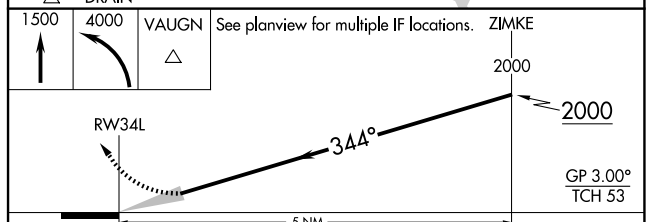


Procedure NA for arrivals at VAUGN on V495 southbound and V121 southwest bound.

ELEV	<b>374</b>	TDZE	<b>368</b>
HIRL Rwy 16L-34R and 16R-34L			
TDZL/RCLS Rwy 16R			
REIL Rwy 34R			



Procedure NA for arrivals at DRAIN on V448 southbound.



CATEGORY	A	B	C	D
RNP 0.20 DA		720/45	352 (400-7%)	
RNP 0.30 DA		761/50	393 (400-1)	

**AUTHORIZATION REQUIRED**

NW-1, 14 MAY 2026 to 11 JUN 2026

NW-1, 14 MAY 2026 to 11 JUN 2026