

RNAV (RNP) Z RWY 34R

MAHLON SWEET FLD (EUG)

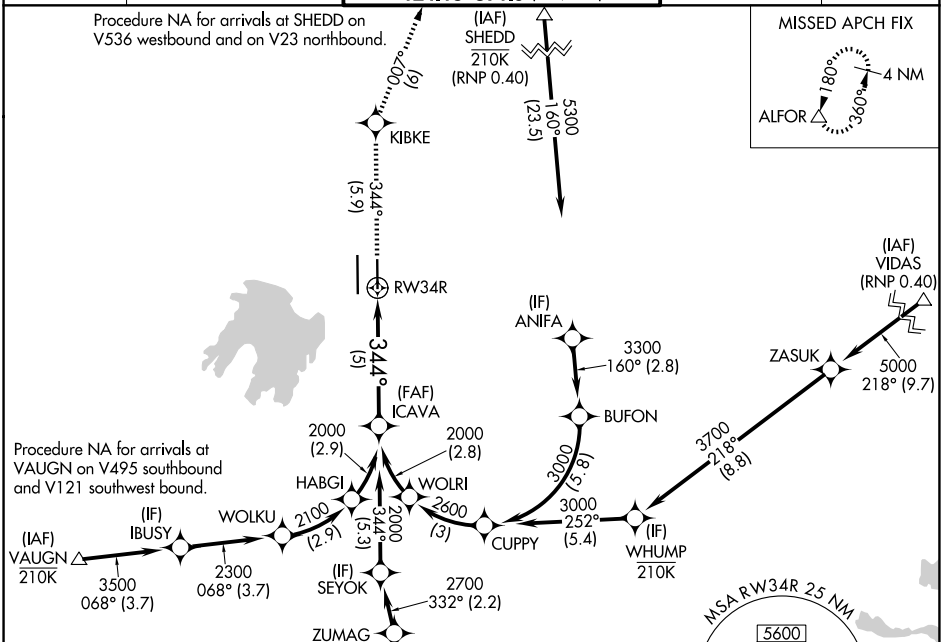
APP CRS	Rwy Ldg	6000
344°	TDZE	374
	Apt Elev	374

RNP AR APCH - GPS.

Simultaneous approach authorized. For uncompensated Baro-VNAV systems, procedure NA below -6°C or above 54°C.

MISSED APPROACH: Climb to 3000 on track 344° to KIBKE and on track 007° to ALFOR and hold.

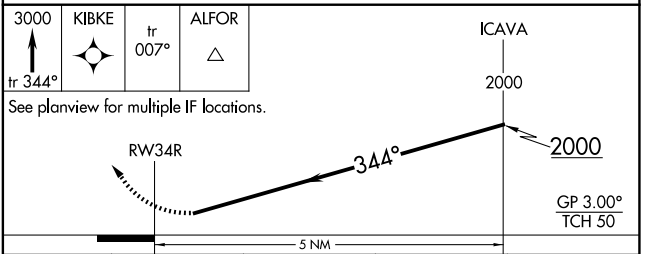
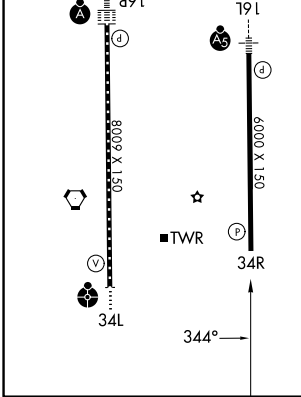
ATIS 125.225	CASCADE APP CON* 119.6 348.7	EUGENE TOWER* 118.9 (CTAF) 371.9 (16R/34L) 124.15 371.9 (16L/34R)	GND CON 121.7 269.5	UNICOM 122.95
------------------------	--	---	-------------------------------	-------------------------



NW-1, 14 MAY 2026 to 11 JUN 2026

NW-1, 14 MAY 2026 to 11 JUN 2026

ELEV 374	D	TDZE 374
HIRL Rwys 16L-34R and 16R-34L		
TDZL/RCLS Rwy 16R		
REIL Rwy 34R		



CATEGORY	A	B	C	D
RNP 0.20 DA		754-1	380 (400-1)	
RNP 0.30 DA		786-1 $\frac{1}{8}$	412 (500-1 $\frac{1}{8}$)	

AUTHORIZATION REQUIRED