

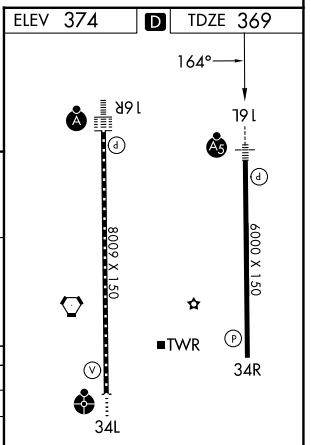
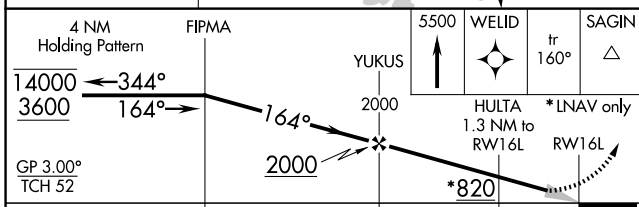
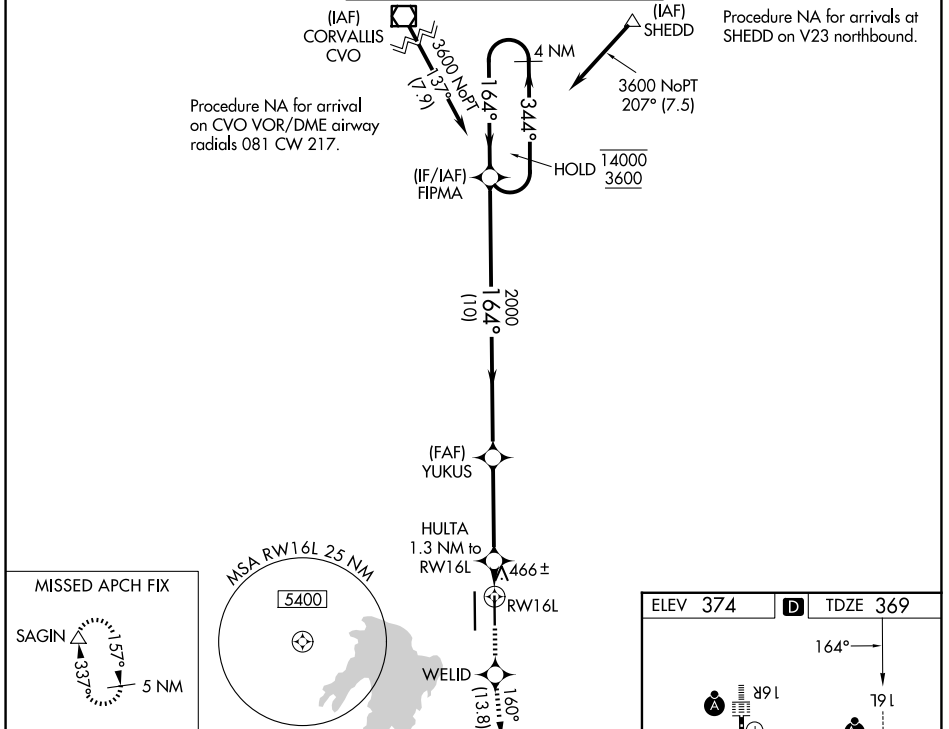
WAAS CH <b>81827</b> <b>W16A</b>	APP CRS <b>164°</b>	Rwy Ldg TDZE Apt Elev	<b>6000</b> <b>369</b> <b>374</b>
--	------------------------	-----------------------------	---

# RNAV (GPS) Y RWY 16L

MAHLON SWEET FLD (EUG)

RNP APCH.	MALSRL	MISSED APPROACH: Climb to 5500 direct WELID and on track 160° to SAGIN and hold, continue climb-in-hold to 5500.
-----------	--------	--

ATIS <b>125.225</b>	CASCADE APP CON* <b>119.6 348.7</b>	EUGENE TOWER* <b>118.9 (CTAF) 371.9 (16R/34L)</b> <b>124.15 371.9 (16L/34R)</b>	GND CON <b>121.7 269.5</b>	UNICOM <b>122.95</b>
------------------------	--	---	-------------------------------	-------------------------



CATEGORY	A	B	C	D
LPV DA		569-1/2	200 (200-1/2)	
LNNAV/VNAV DA		632-1/2	263 (300-1/2)	
LNNAV MDA	720-1/2	351 (400-1/2)	720-5/8	351 (400-5/8)
CIRCLING	820-1 446 (500-1)	840-1 466 (500-1)	1000-1 3/4 626 (700-1 3/4)	1140-2 1/2 766 (800-2 1/2)

TDZL/RCLS Rwy 16R  
REIL Rwy 34R

HIRL Rwy 16L-34R and Rwy 16R-34L

NW-1, 14 MAY 2026 to 11 JUN 2026

NW-1, 14 MAY 2026 to 11 JUN 2026