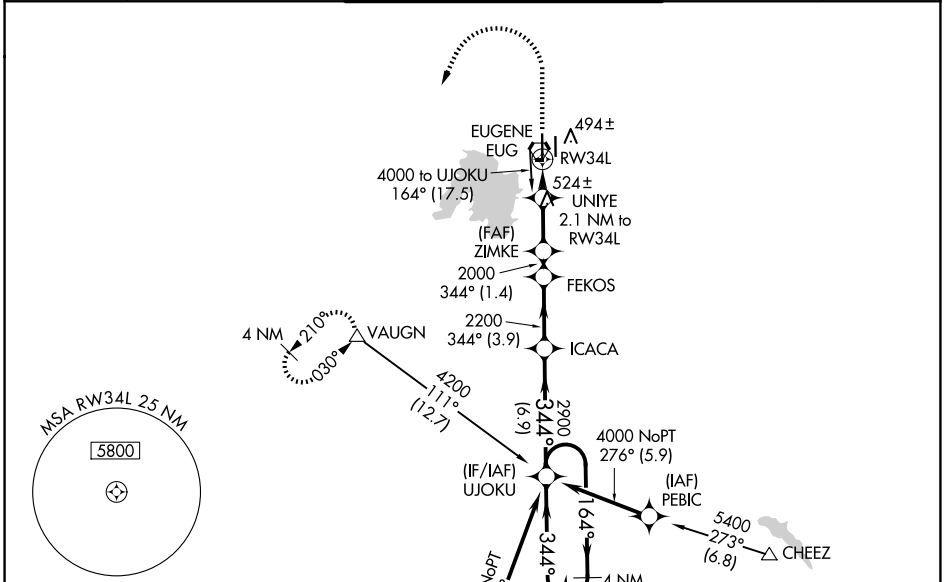


WAAS CH <b>45600</b> <b>W34A</b>	APP CRS <b>344°</b>	Rwy Ldg TDZE Apt Elev	<b>8009</b> <b>368</b> <b>374</b>
----------------------------------------	------------------------	-----------------------------	-----------------------------------------

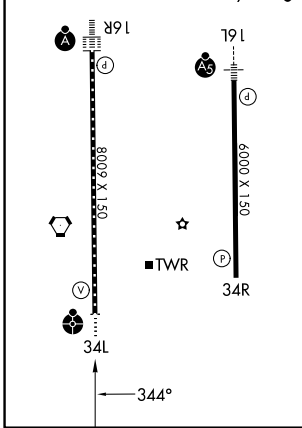
# RNAV (GPS) Y RWY 34L

MAHLON SWEET FLD (EUG)

RNP APCH.		EUGENE TOWER ★		GND CON		UNICOM	
<p>⚠ Simultaneous approach authorized. LNAV procedure NA during simultaneous operations. Use of FD or AP providing RNAV track guidance required during simultaneous operations. For uncompensated Baro-VNAV systems, LNAV/VNAV NA below -10°C or above 54°C. For inop ALS increase LNAV/VNAV visibility Cats A-B to RVR 4500. Inop table does not apply to LPV minimums.</p>		<p>118.9 (CTAF) <b>371.9</b> (16R/34L) <b>124.15 371.9</b> (16L/34R)</p>		<p><b>121.7 269.5</b></p>		<p><b>122.95</b></p>	



ELEV <b>374</b>	<b>D</b>	TDZE <b>368</b>
HIRL Rws 16L-34R and 16R-34L TDZL/RCLS Rwy 16R REIL Rwy 34R		



1500	4000	VAUGN						
			ZIMKE	FEKOS	ICACA	UJOKU	4 NM Holding Pattern	
			UNIYE 2.1 NM to RW34L				164° → 6000	
			*1.1 NM to RW34L				← 344° 4000	
			1080*	2000	2200	2900		GP 3.00° TCH 53
			1.1 NM	1 NM	2.9 NM	1.4 NM	3.9 NM	6.9 NM
CATEGORY	A		B		C		D	
LPV DA	568/40		200 (200-3/4)					
LNAV/VNAV DA	657/40		289 (300-3/4)					
LNAV MDA	760/40		392 (400-3/4)		760/50		392 (400-1)	
CIRCLING	820-1 446 (500-1)		840-1 466 (500-1)		1000-1 3/4 626 (700-1 3/4)		1140-2 1/2 766 (800-2 1/2)	

NW-1, 14 MAY 2026 to 11 JUN 2026

NW-1, 14 MAY 2026 to 11 JUN 2026