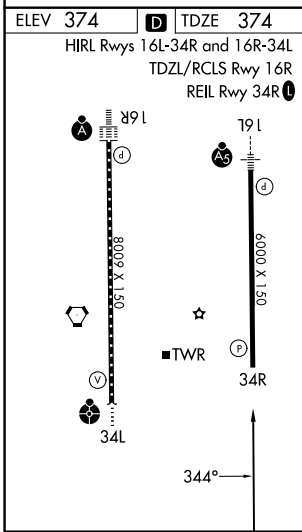
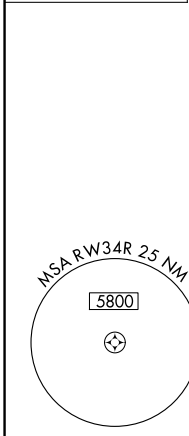
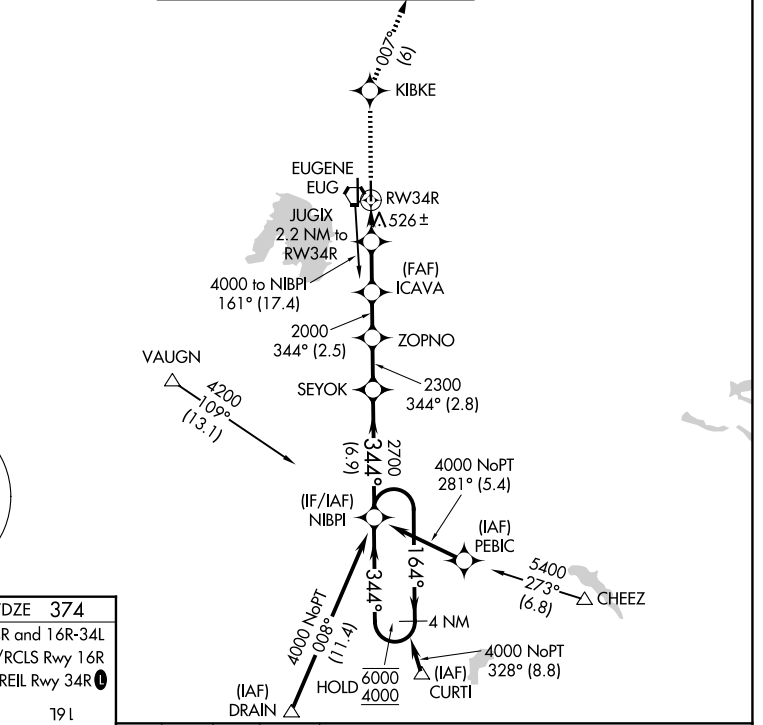
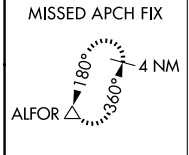


WAAS CH 81900 W34B	APP CRS 344°	Rwy Ldg TDZE Apt Elev	6000 374 374
--	------------------------	-----------------------------	---

RNAV (GPS) Y RWY 34R

MAHLON SWEET FLD (EUG)

RNP APCH.		EUGENE TOWER * 118.9 (CTAF) 0 371.9 (16R/34L) 124.15 371.9 (16L/34R)		GND CON 121.7 269.5	UNICOM 122.95
<p>Simultaneous approach authorized. LNAV procedure NA during simultaneous operations.</p> <p>Use of FD or AP providing RNAV track guidance required during simultaneous operations.</p> <p>Rwy 34R helicopter visibility reduction below 3/4 SM NA. For uncompensated Baro-VNAV systems, LNAV/VNAV NA below -10°C or above 54°C.</p>		<p>MISSED APPROACH: Climb to 3000 direct KIBKE then on track 007° to ALFOR and hold.</p>			
ATIS 125.225	CASCADE APP CON * 119.6 348.7				



3000	KIBKE	tr	ALFOR		NIBPI	4 NM	Holding Pattern
	007°		△				
*LNAV only		JUGIX	ICAVA	ZOPNO	SEYOK	NIBPI	4 NM
		2.2 NM to RW34R	2000	2300	2700		164° → 6000
		*1.1 NM to RW34R					← 344° 4000
			1120*	2000			GP 3.00°
							TCH 50
		1.1 NM	1.1 NM	2.8 NM	2.5 NM	2.8 NM	6.9 NM
CATEGORY	A		B		C		D
LPV DA			636-7/8		262 (300-7/8)		
LNAV/VNAV DA			661-7/8		287 (300-7/8)		
LNAV MDA	780-1		406 (500-1)		780-1 1/8		406 (500-1 1/8)
CIRCLING	820-1 446 (500-1)		840-1 466 (500-1)		1000-1 3/4 626 (700-1 3/4)		1140-2 1/2 766 (800-2 1/2)

NW-1, 14 MAY 2026 to 11 JUN 2026

NW-1, 14 MAY 2026 to 11 JUN 2026