
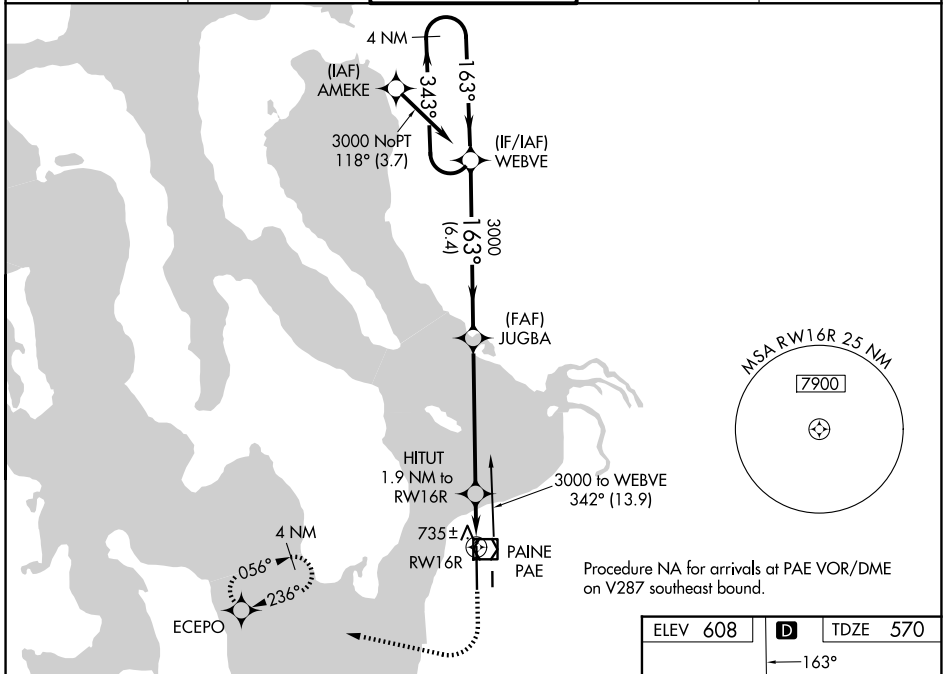


WAAS CH 61129 W16A	APP CRS 163°	Rwy Ldg TDZE Apt Elev	9010 570 608
--	------------------------	-----------------------------	---

RNAV (GPS) Z RWY 16R

SEATTLE PAINE FLD INTL (P.A.E.)

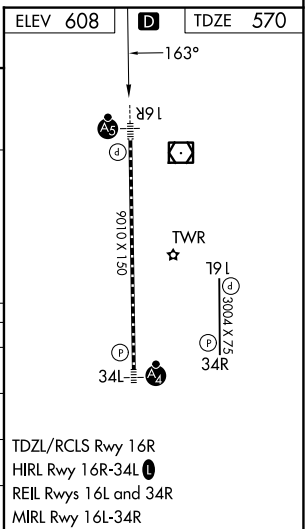
<p>▽ For uncompensated Baro-VNAV systems, LNAV/VNAV NA below -5°C (23°F) or above 54°C (130°F). Circling Rwy 34R NA at night. DME/DME RNP-0.3 NA.</p>		<p>MALSRL</p> 	<p>MISSED APPROACH: (Do not exceed 240K until ECEPO) Climb to 1100 then climbing right turn to 3000 direct ECEPO and hold, continue climb-in-hold to 3000.</p>	
ATIS 128.65	SEATTLE APP CON 128.5 306.9	PAINE TOWER* 132.95 (CTAF) 256.7	GND CON 121.8 339.8	UNICOM 122.95



VGSI and RNAV glidepath not coincident (VGSI Angle 3.00/TCH 74).

4 NM Holding Pattern	WEBVE	JUGBA	HITUT	ECEPO
3000 ← 343°	163° →	3000	1.9 NM to RW16R	*1100 3000 ECEPO
GP 3.00° TCH 57	3000	*1220	*1.1 NM to RW16R	*LNAV only
	6.4 NM	5.6 NM	0.8 NM	1.1 NM

CATEGORY	A	B	C	D
LPV DA		770/18	200 (200-½)	
LNAV/VNAV DA		913/30	343 (400-⅝)	
LNAV MDA	1000/24	430 (400-½)	1000/40	430 (400-¾)
CIRCLING	1100-1	492 (500-1)	1120-1½ 512 (600-1½)	1160-2 552 (600-2)



NW-1, 14 MAY 2026 to 11 JUN 2026

NW-1, 14 MAY 2026 to 11 JUN 2026