

# FALLON-ONE DEPARTURE (NFL1 .NFL)

FALLON NAS (VAN VOORHIS FLD) (KNFL)

[USN]

FALLON, NEVADA

ATIS 370.925 ★  
GND CON 251.15  
NAVY FALLON TOWER ★  
119.25 340.2  
NAVY FALLON DEP CON ★  
120.85 360.2

RADAR required

**TOP ALTITUDE:  
ASSIGNED BY ATC**

Rwy	Knots	60	120	180	240	300	360
7 (A)	V/V(fpm)	276	552	828	1104	1380	1656
13L/R (B)	V/V(fpm)	211	422	633	844	1055	1266

Minimum Climb Rate

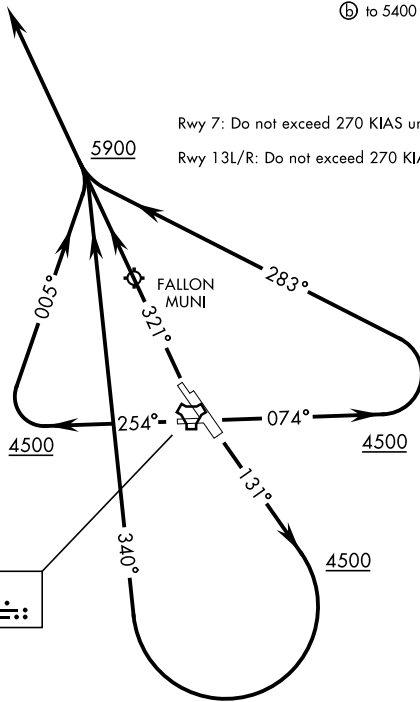
(A) to 5200

(B) to 5400

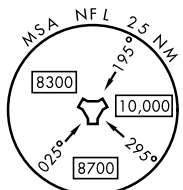
Rwy 7: Do not exceed 270 KIAS until hdg 283°.

Rwy 13L/R: Do not exceed 270 KIAS until hdg 340°.

CAUTION: Fallon Muni Airport (uncontrolled) 5 NM NW pattern alt 800' AGL.



FALLON  
Chan 82 NFL



SW-4, 14 MAY 2026 to 11 JUN 2026

SW-4, 14 MAY 2026 to 11 JUN 2026

## DEPARTURE ROUTE DESCRIPTION

**TAKEOFF RWY 7:** Climb heading 074° to 4500, then climbing left turn heading 283°, maintain 5900 or ATC assigned altitude, thence...

**TAKEOFF RWY 13 L/R:** Climb on heading 131° to 4500, then climbing right turn heading 340°, maintain 5900 or ATC assigned altitude, thence...

**TAKEOFF RWY 25:** Climb on heading 254° to 4500, then climbing right turn heading 005°, maintain 5900 or ATC assigned altitude, thence...

**TAKEOFF RWY 31 L/R:** Climb on heading 321°, maintain 5900 or ATC assigned altitude, thence...

...expect radar vectors to first enroute navaid/fix. Expect clearance to requested altitude/flight level five minutes after departure.

# FALLON-ONE DEPARTURE (NFL1 .NFL)

Orig 02OCT25

FALLON, NEVADA

FALLON NAS (VAN VOORHIS FLD) (KNFL)