

FALLON, NEVADA

RNAV (GPS) RWY 25

APCH CRS	Rwy Idg	7002
254°	TDZE	3928
	Arpt Elev	3935

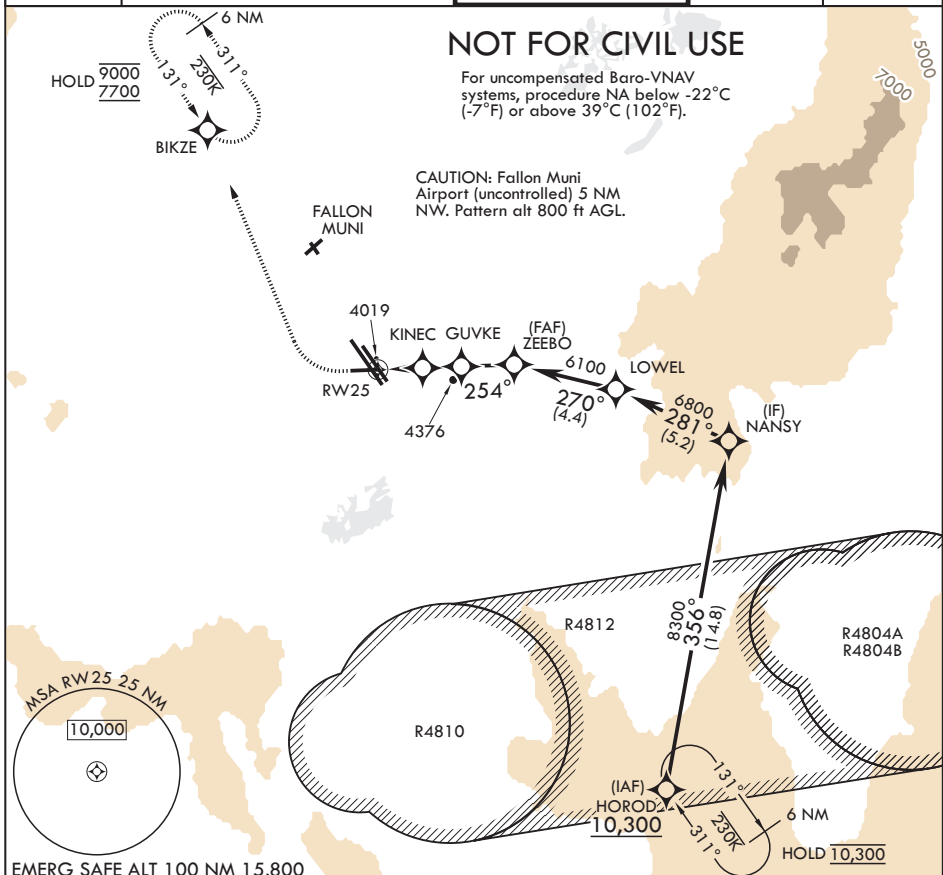
(USN)

FALLON NAS (VAN VOORHIS FLD) (KNFL)

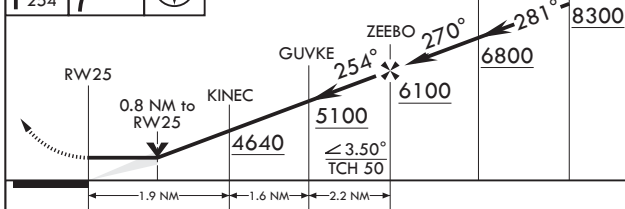
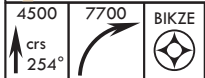
RNP APCH-GPS

MISSED APPROACH: Climb to 4500 then climbing right turn to 7700 direct BIKZE and hold. Continue climb-in-hold to 7700.

ATIS★ 370.925	NAVY FALLON APP CON/DEP CON★ 120.85 360.2	NAVY FALLON TOWER★ 119.25 340.2	GND CON 251.15	ASR/PAR
-------------------------	---	---	--------------------------	---------

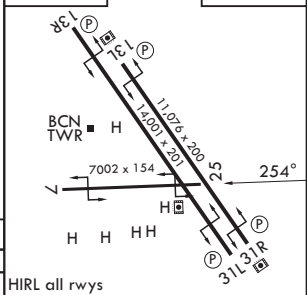


EMERG SAFE ALT 100 NM 15,800



CATEGORY	A	B	C	D
RNAV MDA	4280-1	352	(400-1)	

ELEV 3935 TDZE 3928



FALLON, NEVADA
Orig 02OCT25

39°25'N - 118°42'W

FALLON NAS (VAN VOORHIS FLD) (KNFL)

RNAV (GPS) RWY 25

SW-4, 14 MAY 2026 to 11 JUN 2026

SW-4, 14 MAY 2026 to 11 JUN 2026