

FALLON, NEVADA

RNAV (GPS) RWY 31L

APCH CRS	Rwy Idg	14,001
311°	TDZE	3927
	Arprt Elev	3935

(USN)

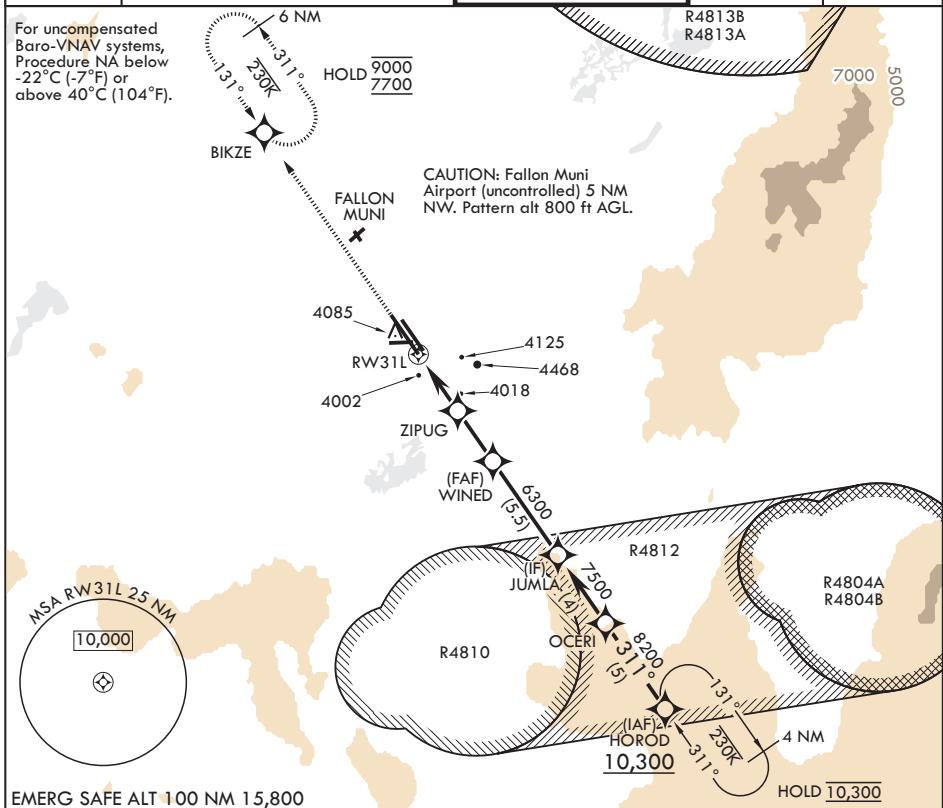
FALLON NAS (VAN VOORHIS FLD) (KNFL)

RNP APCH-GPS

MISSED APPROACH: Climb to 5000 then climbing to 7700 direct BIKZE and hold, continue climb-in-hold to 7700.

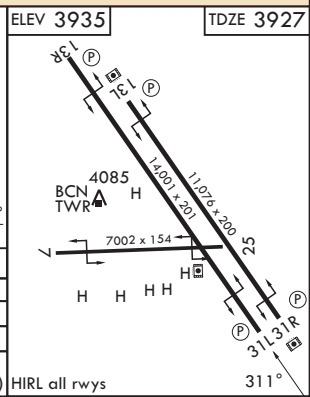
ATIS★ 370.925	NAVY FALLON APP CON/DEP CON★ 120.85 360.2	NAVY FALLON TOWER★ 119.25 340.2	GND CON 251.15	ASR/PAR
------------------	----------------------------------------------	------------------------------------	-------------------	---------

For uncompensated Baro-VNAV systems, Procedure NA below -22°C (-7°F) or above 40°C (104°F).



EMERG SAFE ALT 100 NM 15,800

5000	7700	BIKZE	VGSi and RNAV glidepath not coincident (VGSi Angle 3.50/TCH 61)			
↑ crs 311°	↑	⊕	JUMLA			
RW31L			ZIPUG		WINED	
0.8 NM to RW31L			4980		7500	
3.3 NM			2.9 NM		6300	
GP 3.50°			TCH 50			
CATEGORY	A	B	C	D		
LNAV/VNAV DA	4177-3/4		250	(300-3/4)		
LNAV MDA	4280-1		353	(400-1)		
CIRCLING	4400-1 465 (500-1)	4440-1 505 (600-1)	4780-2 1/2 845 (900-2 1/2)	5120-3 1185 (1200-3)		



FALLON, NEVADA

39°25'N - 118°42'W

FALLON NAS (VAN VOORHIS FLD) (KNFL)

Amdt 4 02OCT25

RNAV (GPS) RWY 31L

SW-4, 14 MAY 2026 to 11 JUN 2026

SW-4, 14 MAY 2026 to 11 JUN 2026