

FALLON, NEVADA

# TACAN RWY 25

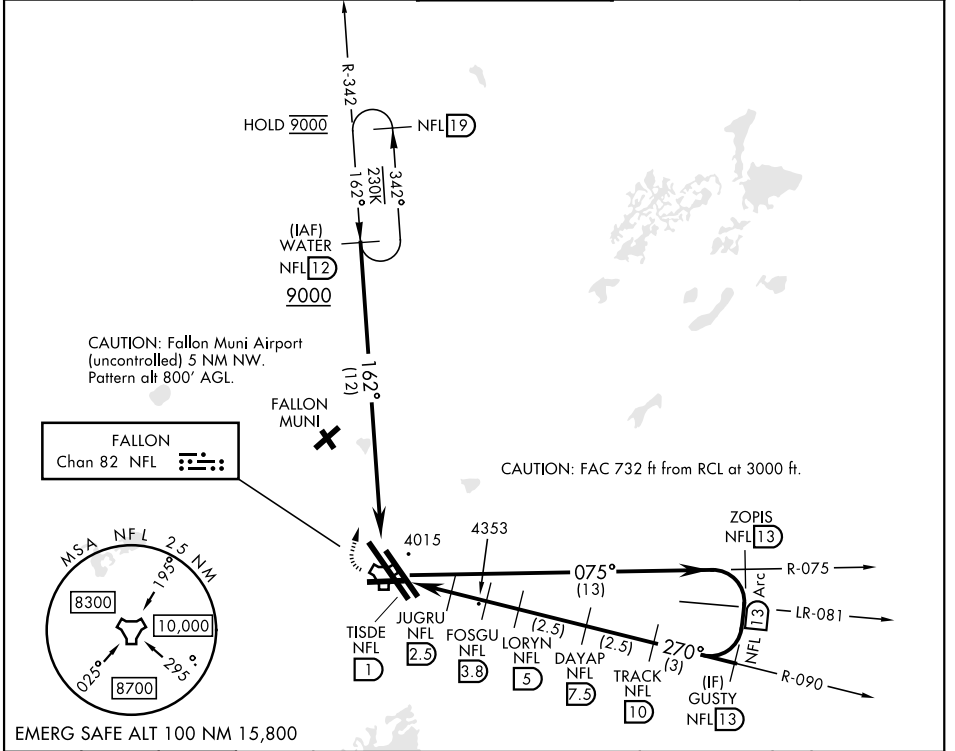
TACAN NFL Chan <b>82</b>	APCH CRS <b>270°</b>	Rwy Ldg TDZE Arpt Elev <b>7002</b> <b>3928</b> <b>3935</b>
-----------------------------	-------------------------	---

[USN]

FALLON NAS (VAN VOORHIS FLD) (KNFL)

**MISSED APPROACH:** Climb to 8000 direct NFL TACAN, and right turn on heading 027° and NFL R-342 to WATER and hold, continue climb-in-hold to 8000.

ATIS ★ <b>370.925</b>	NAVY FALLON APP CON ★ <b>120.85 360.2</b>	NAVY FALLON TOWER ★ <b>119.25 340.2</b>	GND CON <b>251.15</b>	ASR/PAR
--------------------------	--	--	--------------------------	---------



SW-4, 14 MAY 2026 to 11 JUN 2026

SW-4, 14 MAY 2026 to 11 JUN 2026

TACAN RWY 25 Profile and Details

8000	NFL	hdg 027°	NFL R-342
ELEV	3935	TDZE	3928

CATEGORY	A	B	C	D
S-25	4280-1	352	(400-1)	

HIRL all rwys

FALLON, NEVADA

39°25'N-118°42'W FALLON NAS (VAN VOORHIS FLD) (KNFL)

Orig 02OCT25

# TACAN RWY 25