

YERIN-EIGHT DEPARTURE (YERIN8.YERIN)

FALLON NAS (VAN VOORHIS FLD) (KNFL)

FALLON, NEVADA

ATIS 370.925 ★
 CLNC DEL 353.55
 GND CON 251.15
 NAVY FALLON TOWER ★
 119.25 340.2
 NAVY FALLON APP/DEP CON ★
 120.85 360.2

TOP ALTITUDE
15,000

[USN]

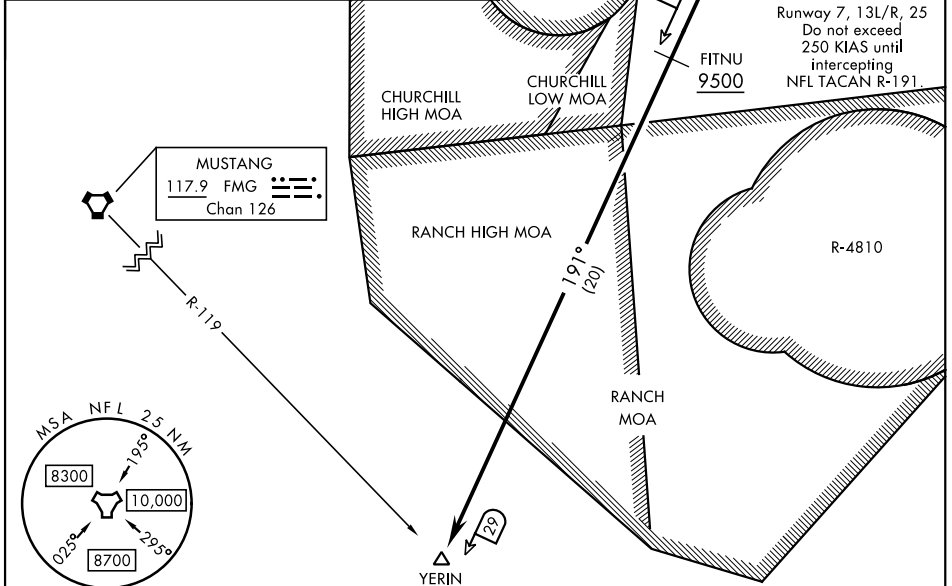
FALLON MUNI

CAUTION: Fallon Muni
 Airport (uncontrolled)
 5 NM NW Pattern
 alt 800 AGL

FALLON
 Chan 82 NFL

Rwy	Knots	60	120	180	240	300	360
7	V/V(fpm)	235	470	705	940	1175	1410
13L/R	V/V(fpm)	255	510	765	1020	1275	1530
25	V/V(fpm)	258	516	774	1032	1290	1548
31L/R	V/V(fpm)	213	426	639	852	1065	1278

Minimum climb rate military and civil to 7500



SW-4, 14 MAY 2026 to 11 JUN 2026

SW-4, 14 MAY 2026 to 11 JUN 2026

DEPARTURE ROUTE DESCRIPTION

TAKEOFF RWY 7: Climb on hdg 074°, then turn right hdg 236° to intercept NFL TACAN R-191 to YERIN. Cross FITNU at or above 9500. Do not exceed 250 KIAS until intercepting NFL R-191.

TAKEOFF RWY 13L/R: Climb on hdg 131°, then right turn hdg 236° to intercept NFL TACAN R-191 to YERIN. Cross FITNU at or above 9500. Do not exceed 250 KIAS until intercepting NFL R-191.

TAKEOFF RWY 25: Climb on hdg 254°, then left turn hdg 146° to intercept NFL TACAN R-191 to YERIN. Cross FITNU at or above 9500. Do not exceed 250 KIAS until intercepting NFL R-191.

TAKEOFF RWY 31L/R: Climb on hdg 311° to 4500, then climbing right turn to NFL TACAN, intercept NFL R-191 to YERIN. Cross FITNU at or above 9500. Do not exceed 250 KIAS until NFL TACAN.

YERIN-EIGHT DEPARTURE (YERIN8.YERIN)

FALLON, NEVADA