


LOC/DME I-FAR 110.3 Chan 40	APP CRS 356°	Rwy Ldg TDZE Apt Elev	9001 899 901
---	------------------------	-----------------------------	---

ILS or LOC RWY 36

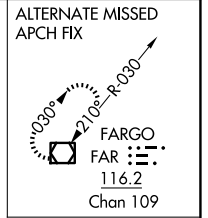
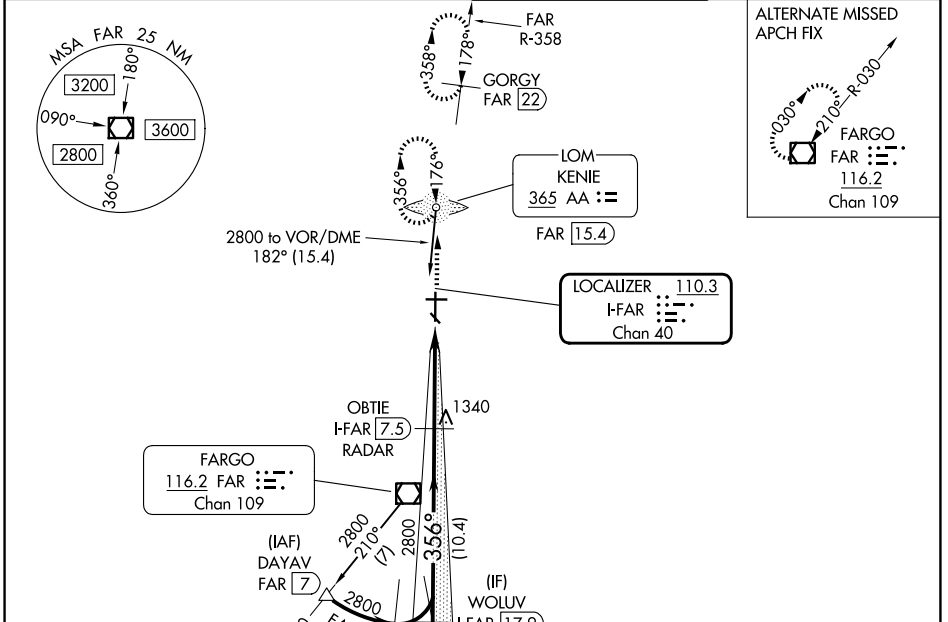
HECTOR INTL (F.A.R.)

ADF or DME required for procedure entry. ADF or DME required.

MALSR
 MISSED APPROACH: Climb to 2500 direct KENIE LOM and hold (DME aircraft climb to 4000 on FAR VOR/DME R-358 to GORGY/22 DME and hold N, RT, 178° inbound, continue climb-in-hold to 4000).

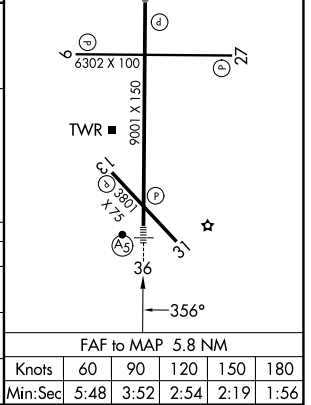
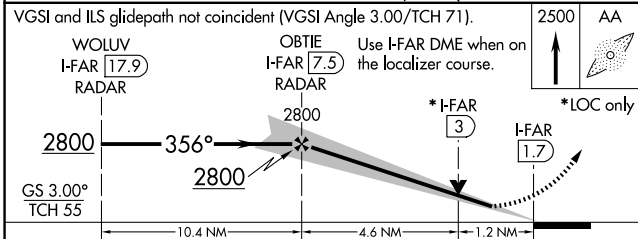
⚠ For inop ALS increase S-ILS 36 Cat E visibility to RVR 4000 and S-LOC 36 Cat C/D/E visibility to 1 3/8 SM. #RVR 1800 authorized with use of FD or AP or HUD to DA.

ATIS 124.5 379.2	FARGO APP CON 120.4 377.15	FARGO TOWER 133.8 290.4	GND CON 121.9 348.6
----------------------------	--------------------------------------	-----------------------------------	-------------------------------



ELEV 901	TDZE 899
----------	----------

MIRL Rwy 9-27 and 13-31
 REIL Rwy 9 and 27
 HIRL Rwy 18-36 81



CATEGORY	A	B	C	D	E
S-ILS 36#	1099/24 200 (200-1/2)				
S-LOC 36	1360/24	461 (500-1/2)	1360/50 461 (500-1)		
CIRCLING	1380-1	479 (500-1)	1520-1 3/4 619 (700-1 3/4)	1620-2 1/4 719 (800-2 1/4)	1620-2 1/2 719 (800-2 1/2)

NC-1, 14 MAY 2026 to 11 JUN 2026

NC-1, 14 MAY 2026 to 11 JUN 2026