

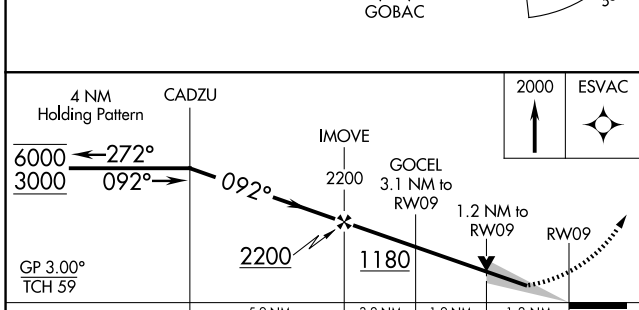
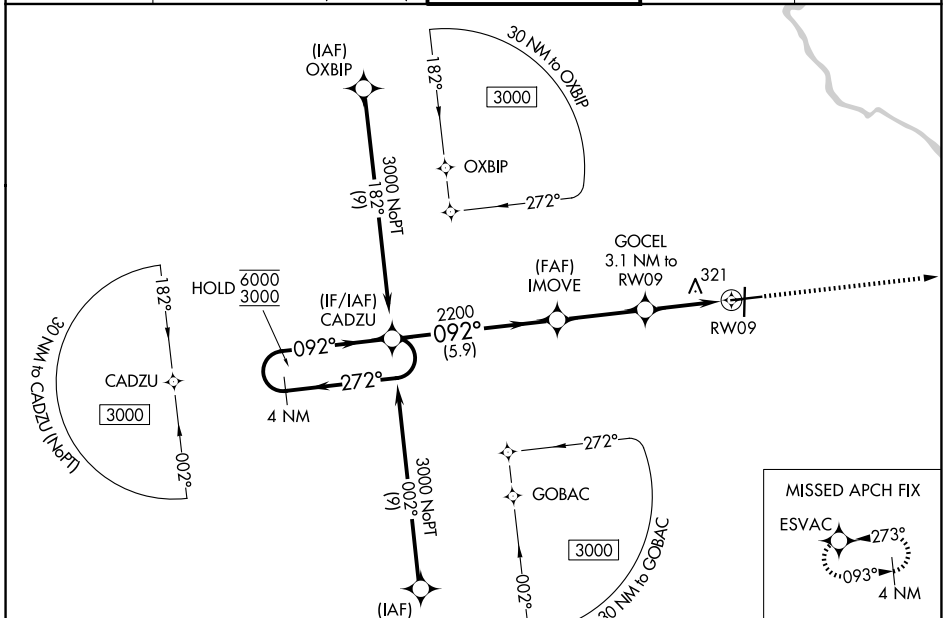
WAAS CH 70710 W09A	APP CRS 092°	Rwy Ldg TDZE Apt Elev	6502 147 147
--	------------------------	-----------------------------	---

RNAV (GPS) RWY 9

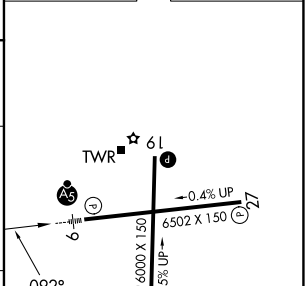
FLORENCE RGNL (FLO)

RNP APCH - GPS.		MALSR	MISSED APPROACH: Climb to 2000 direct ESVAC and hold.
For uncompensated Baro-VNAV systems, LNAV/VNAV NA below -7°C or above 54°C. Circling Rwy 1, 19 NA at night.			

ATIS 123.625	FLORENCE APP CON★ 118.6 341.7 (256°-074°) 135.25 316.15 (075°-255°)	FLORENCE TOWER★ 125.1 (CTAF) 0 353.85	GND CON 121.9 353.85	UNICOM 122.95
------------------------	---	--	--------------------------------	-------------------------



ELEV 147	TDZE 147
----------	----------



CATEGORY	A	B	C	D
LPV DA		347-1/2	200 (200-1/2)	
LNAV/VNAV DA		603-7/8	456 (500-7/8)	
LNAV MDA	580-1/2	433 (500-1/2)	580-3/4	433 (500-3/4)
CIRCLING	640-1 493 (500-1)	660-1 513 (600-1)	900-2 1/4 753 (800-2 1/4)	900-2 1/2 753 (800-2 1/2)

REIL Rwy 1, 19 and 27

HIRL Rwy 9-27

MIRL Rwy 1-19

SE-2, 14 MAY 2026 to 11 JUN 2026

SE-2, 14 MAY 2026 to 11 JUN 2026