

# VOR/DME RWY 15

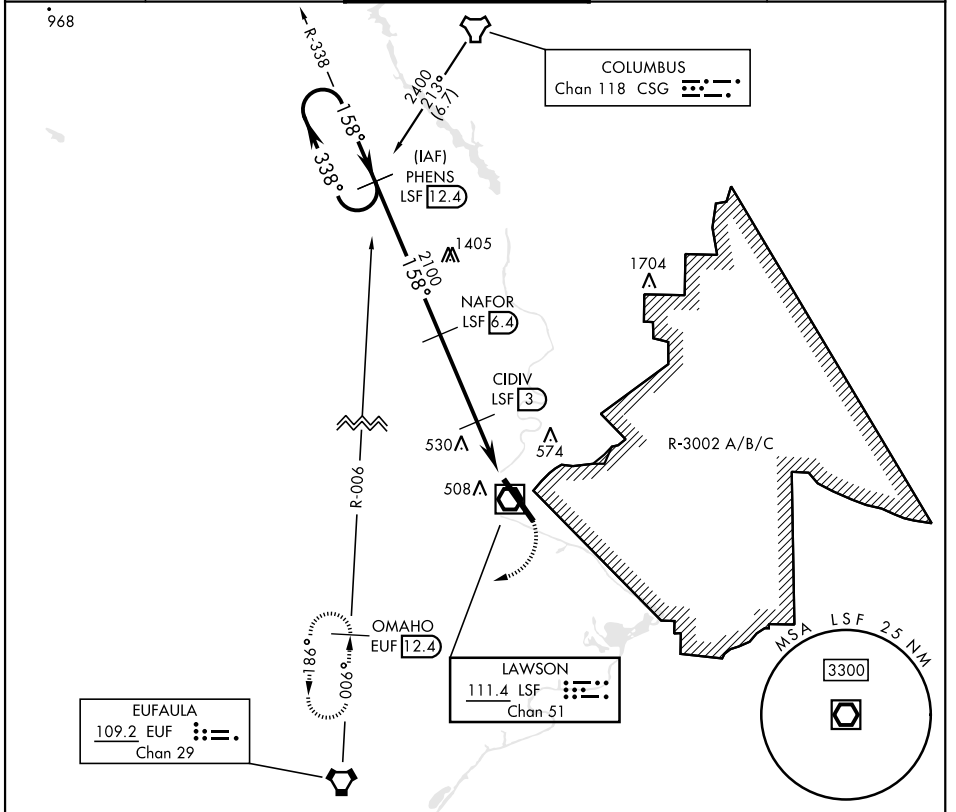
VOR/DME LSF <b>111.4</b> Chan <b>51</b>	APCH CRS <b>158°</b>	Rwy Idg <b>10,002</b> TDZE <b>227</b> Arprt Elev <b>227</b>
---	-------------------------	---

[USA]

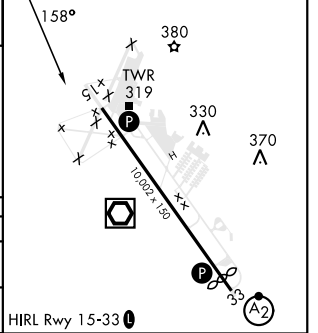
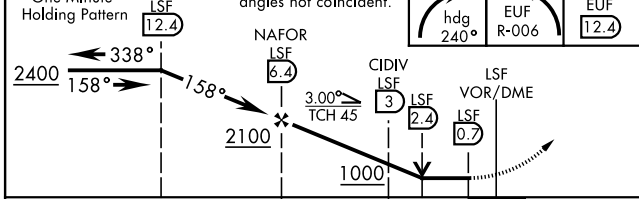
LAWSON AAF (KLSF)

**▼** \* Circling not authorized E of Rwy 15-33. MISSED APPROACH: Climbing right turn to 2400 via heading 240° and EUF VORTAC R-006 to OMAHO INT/EUF 12.4 DME and hold.

ATIS★ <b>134.375</b>	ATLANTA APP CON <b>125.5 323.1</b>	TOWER★ <b>119.05</b> (CTAF) <b>0 269.525</b>	GND CON <b>121.7 254.25</b>	CLNC DEL <b>121.7 251.15</b>
-------------------------	---------------------------------------	---	--------------------------------	---------------------------------



One Minute Holding Pattern	PHENS LSF 12.4	VGSI and descent angles not coincident.	2400 hdg 240°	EUF R-006	OMAHO EUF 12.4	ELEV 227	TDZE 227
----------------------------	----------------	---	---------------	-----------	----------------	----------	----------



CATEGORY	A	B	C	D
S-15	820/50	594 (600-1)	820-1½ 594 (600-1½)	820-1¾ 594 (600-1¾)
CIRCLING*	820-1	593 (600-1)	840-1¾ 613 (700-1¾)	880-2 653 (700-2)

# VOR/DME RWY 15

SE-4, 14 MAY 2026 to 11 JUN 2026

SE-4, 14 MAY 2026 to 11 JUN 2026