

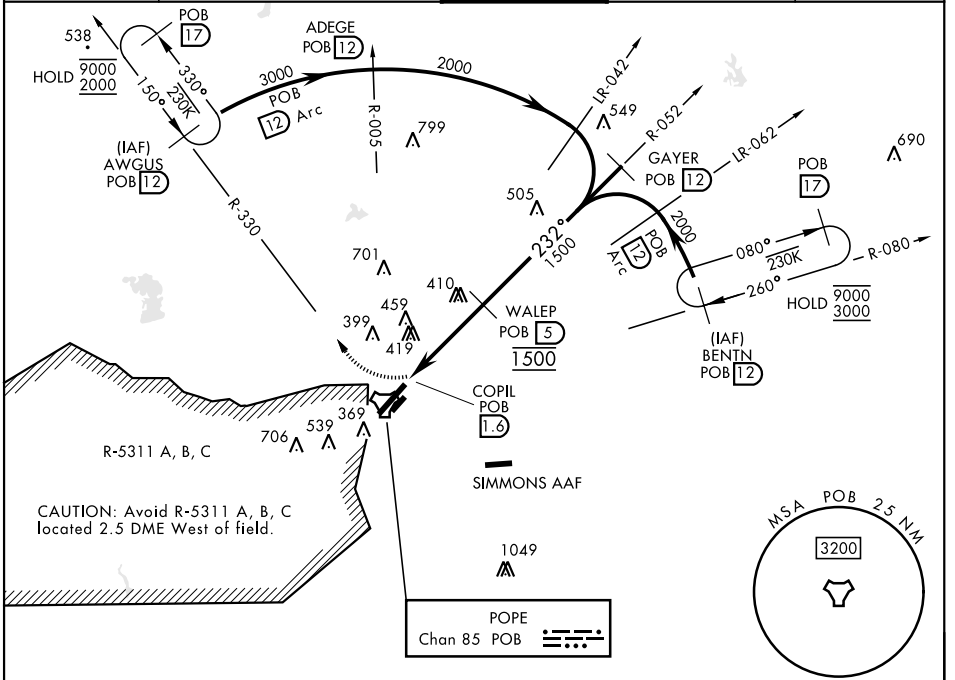
FORT BRAGG, NORTH CAROLINA

TACAN RWY 23

TACAN POB Chan 85	APCH CRS 232°	Rwy ldg TDZE 200 Arprt Elev 225	[USAF]	POPE AAF (KPOB)
-----------------------------	-------------------------	--	--------	-----------------

RADAR required	ALSF-1 	MISSED APPROACH: Climbing right turn to 2000 direct AWGUS and hold.
<p>▼ * When ALS inop, increase CAT AB RVR to 55 and vis to 1 mile; CAT CD vis to 1 3/8 miles.</p> <p>** Circling not authorized SE of Rwy 5-23.</p>		

ATIS 132.3 353.725	FAYETTEVILLE APP CON 125.175 285.575 (271°- 090°) 133.0 290.25 (091°- 270°)	TOWER 135.025 291.1	GND CON 124.55 275.8	CLNC DEL 124.55 275.8
------------------------------	---	-------------------------------	--------------------------------	---------------------------------

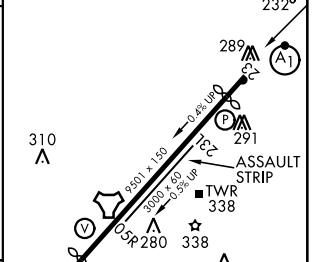
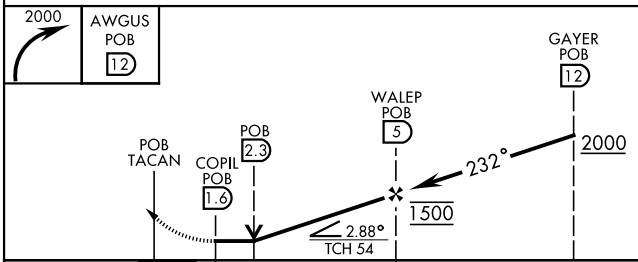


SE-2, 14 MAY 2026 to 11 JUN 2026

SE-2, 14 MAY 2026 to 11 JUN 2026

ELEV	225	TDZE	200
------	-----	------	-----

EMERG SAFE ALT 100 NM 5300



CATEGORY	A	B	C	D
S-23*	760/24 560 (600-1/2)	760/60 560 (600-1 1/2)		
CIRCLING**	760-1 542 (600-1)	920-2 702 (800-2)	1060-2 842 (900-2 3/4)	

HIRL Rwy 05-23
LIRL Rwy 05R-23L
REIL Rwy 05

FORT BRAGG, NORTH CAROLINA 35°10'N-79°01'W POPE AAF (KPOB)

Amdt 5 11JUL24

TACAN RWY 23