

(HAR.HAR5) 25219

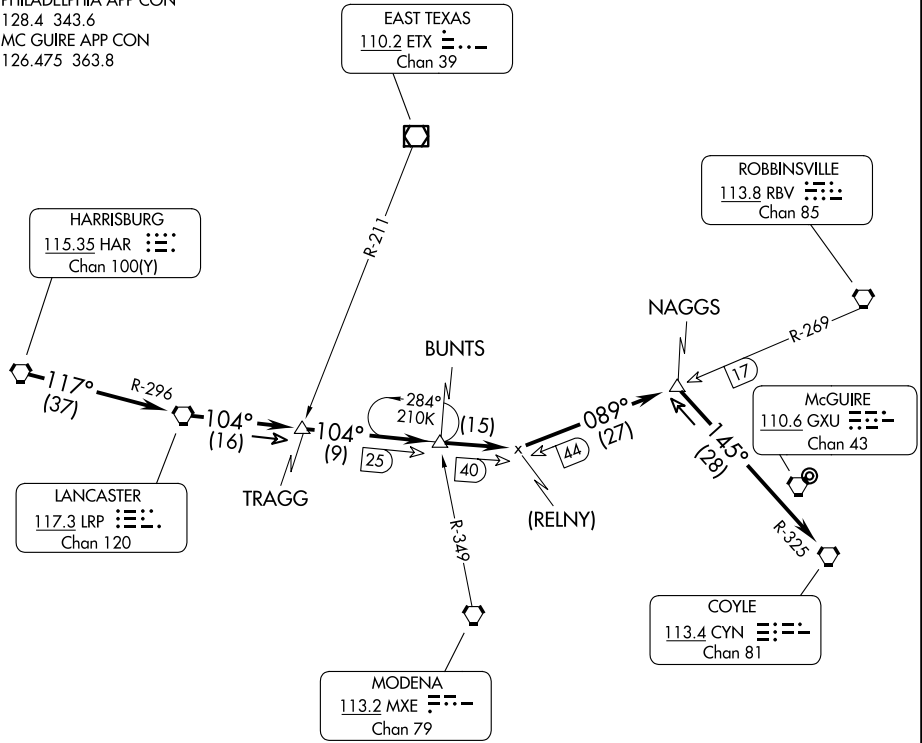
AL-150 (FAA)

MC GUIRE FIELD  
(JOINT BASE MC GUIRE DIX LAKEHURST) (KWR.I)  
WRIGHTSTOWN, NEW JERSEY

# HARRISBURG FIVE ARRIVAL

D-ATIS

110.6 270.1  
PHILADELPHIA APP CON  
128.4 343.6  
MC GUIRE APP CON  
126.475 363.8



NOTE: Route depicted beyond Naggs Int is for lost communications or radar outage only.

NOTE: Not for use by fighter type aircraft.

NOTE: Descent below 3500 prior to NAGGS may transition below the KPHL class Bravo Airspace.

NOTE: Chart not to scale

## ARRIVAL ROUTE DESCRIPTION

From over HAR VORTAC via HAR R-117 and LRP R-296 to LRP VORTAC. Thence via LRP R-104 to LRP R-104/40 DME and RBV R-269/44 DME. Thence via RBV R-269 to NAGGS INT. Thence via CYN R-325 to CYN VORTAC. Expect radar vector to final approach 8 DME west of GXU VORTAC. Expect descent below 10000 after HAR VORTAC.

**HARRISBURG FIVE ARRIVAL**  
(HAR.HAR5) 22MAY97

MC GUIRE FIELD  
(JOINT BASE MC GUIRE DIX LAKEHURST) (KWR.I)  
WRIGHTSTOWN, NEW JERSEY

NE-2, 14 MAY 2026 to 11 JUN 2026

NE-2, 14 MAY 2026 to 11 JUN 2026