

ILS RWY 6 (CAT II)

MC GUIRE FLD,

(JOINT BASE MC GUIRE DIX LAKEHURST) (KWRI)

LOC I-WRI 110.1	APCH CRS 058°	Rwy Idg 11,009 TDZE 131 Arprt Elev 141
---------------------------	-------------------------	---

[USAF]

RADAR or DME required to identify the FAF.

ALSF-2

MISSED APPROACH: Climb to 2000 via GXU R-059 to DAYYO and hold. Alternate Missed Approach instructions: Climb to 2000 via GXU R-059 to DAYYO, expect further clearance from ATC.

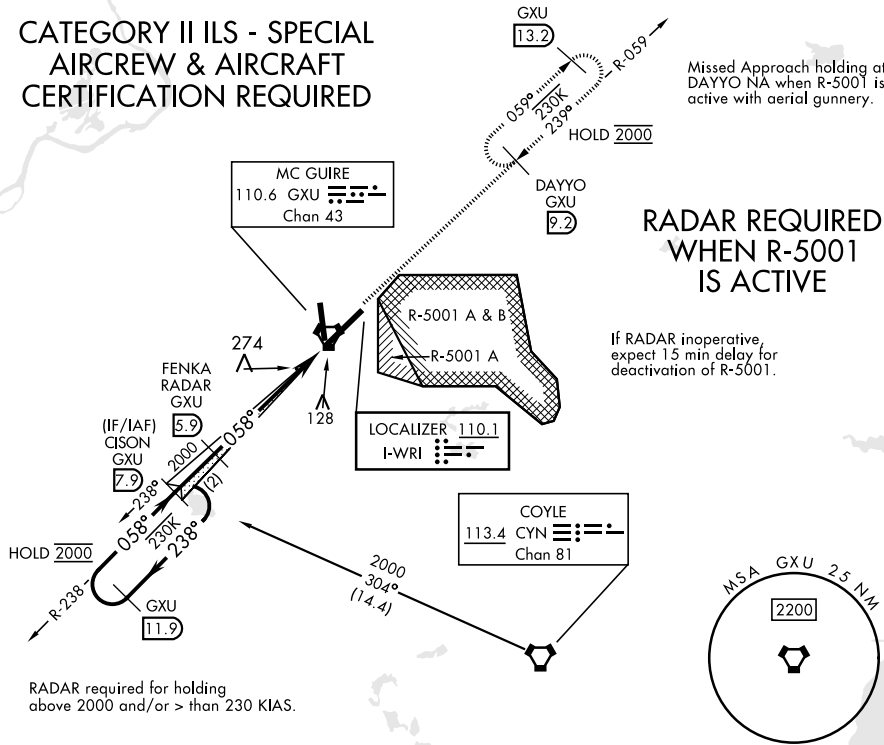
ATIS 110.6 270.1	MC GUIRE APP CON/DEP CON 126.475 363.8	TOWER 118.65 255.6	GND CON 121.8 275.8	PAR
----------------------------	--	------------------------------	-------------------------------	-----

CATEGORY II ILS - SPECIAL AIRCREW & AIRCRAFT CERTIFICATION REQUIRED

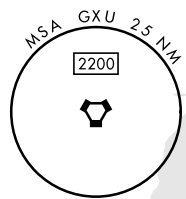
Missed Approach holding at DAYYO NA when R-5001 is active with aerial gunnery.

RADAR REQUIRED WHEN R-5001 IS ACTIVE

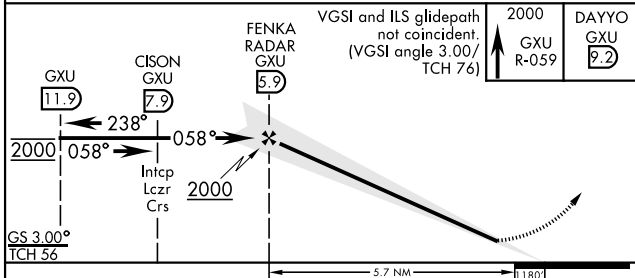
If RADAR inoperative, expect 15 min delay for deactivation of R-5001.



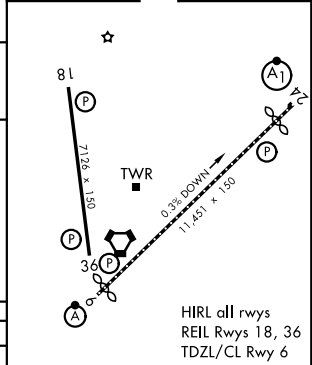
RADAR required for holding above 2000 and/or > than 230 KIAS.



EMERG SAFE ALT 100 NM 5100



ELEV	141	TDZE	131
------	-----	------	-----



HIRL all rwys
REIL Rwy 18, 36
TDZL/CL Rwy 6

CATEGORY	A	B	C	D	E
S-ILS 6		RA 91/12	100	DA 231	

ILS RWY 6 (CAT II)

NE-2, 14 MAY 2026 to 11 JUN 2026

NE-2, 14 MAY 2026 to 11 JUN 2026