

WRIGHTSTOWN, NEW JERSEY

# RNAV (GPS) RWY 24

WAAS CH 91359 W24A	APCH CRS 238°	Rwy ldg TDZE Arprt Elev	10,456 117 141
--------------------------	------------------	-------------------------------	----------------------

(USAF)

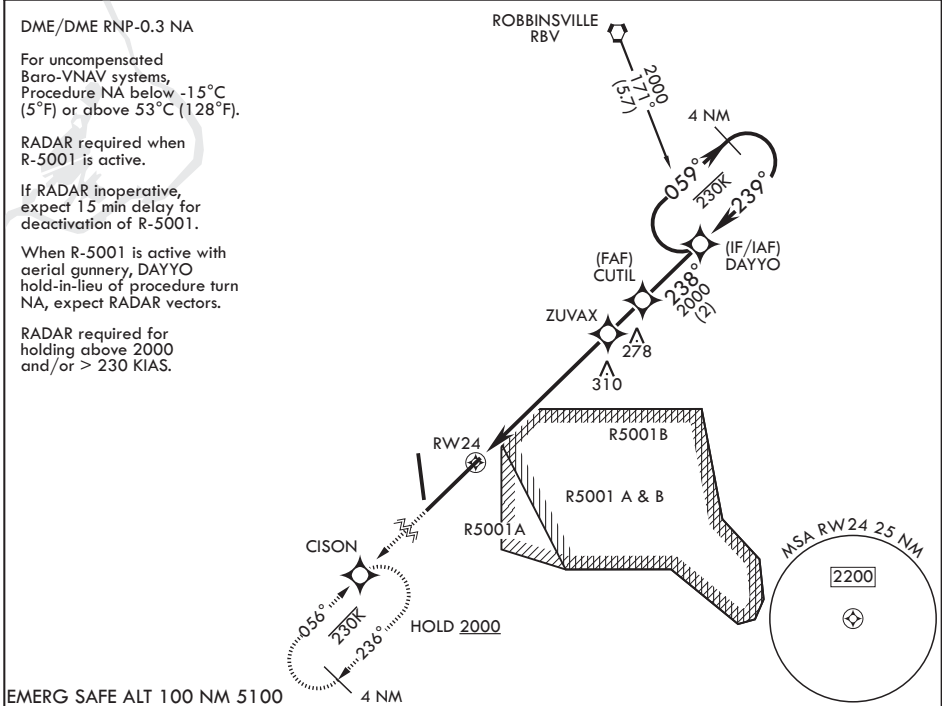
MC GUIRE FIELD (JOINT BASE MC GUIRE DIX LAKEHURST) (KWRI)

\* When ALS inop, increase RVR to 40, vis to 3/4 mile.  
 \*\* When ALS inop, increase vis to 1 3/8 miles.  
 \*\*\* When ALS inop increase CAT AB RVR to 55, vis to 1 mile, CAT CDE vis to 1 3/8 miles.  
 \*\*\*\* Circling NA SE of Rwy 24 and E of Rwy 36 when R-5001 A/B Active.

ALSF-1

MISSED APPROACH: Climb to 2000 direct CISON and hold.

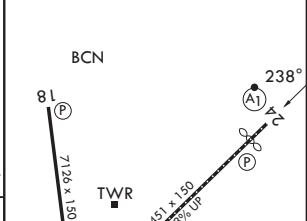
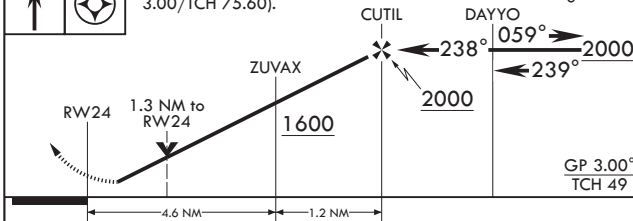
ATIS 110.6 270.1	MC GUIRE APP CON/DEP CON 126.475 363.8	TOWER 118.65 255.6	GND CON 121.8 275.8	PAR
---------------------	---	-----------------------	------------------------	-----



EMERG SAFE ALT 100 NM 5100

VGS1 and RNAV glidepath not coincident (VGS1 angle 3.00/TCH 75.60).

ELEV 141	See Supp for declared dist.	TDZE 117
----------	-----------------------------	----------



CATEGORY	A	B	C	D	E
LPV DA*	317/24		200	(200-1/2)	
LNAV/VNAV DA**	580/50		463	(500-1)	
LNAV MDA***	580/24	463 (500-1/2)	580/50	463	(500-1)
CIRCLING****	680-1	539 (600-1)	700-1 1/2 559 (600-1 1/2)	700-2 559 (600-2)	1200-3 1059 (1100-3)

HIRL all rwys  
REIL Rwy 18 and 36  
TDZL/CL Rwy 6

NE-2, 14 MAY 2026 to 11 JUN 2026

NE-2, 14 MAY 2026 to 11 JUN 2026

WRIGHTSTOWN, NEW JERSEY

MC GUIRE FIELD (JOINT BASE MC GUIRE DIX LAKEHURST) (KWRI)

Amdt 7 18MAY23

40°01'N - 74°36'W

# RNAV (GPS) RWY 24