

WRIGHTSTOWN, NEW JERSEY

RNAV (GPS) RWY 6

WAAS CH 91356 W06A	APCH CRS 058°	Rwy ldg TDZE Arprt Elev	11,009 131 141
--------------------------	------------------	-------------------------------	----------------------

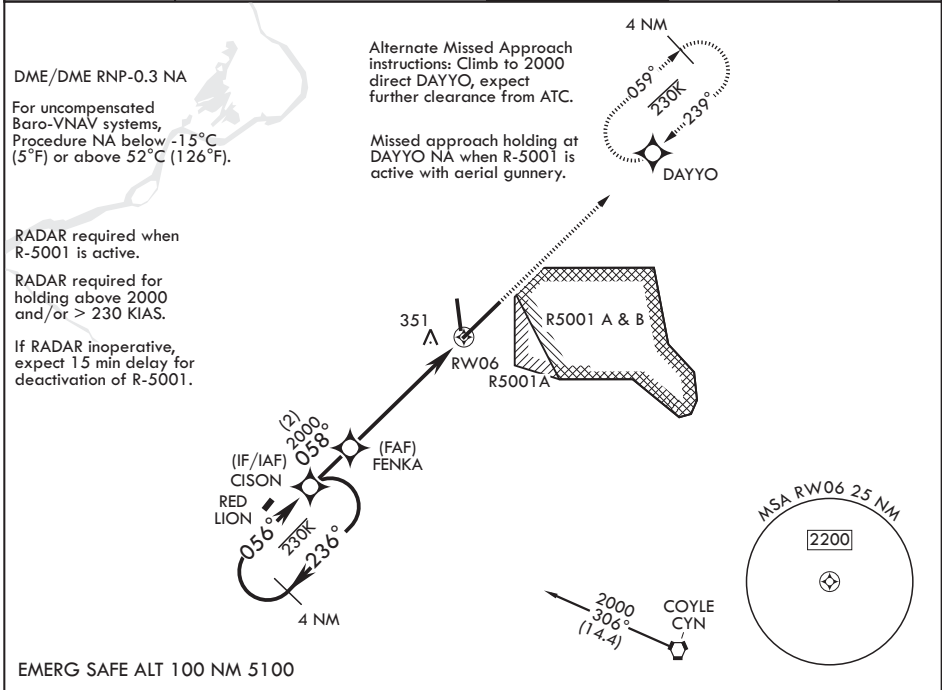
(USAF)

MC GUIRE FIELD (JOINT BASE MC GUIRE DIX LAKEHURST) (KWRI)

V * When TDZ/CL lights inop, increase RVR to 24. When ALS inop, increase RVR to 40, vis to 3/4 mile.
 ** When ALS inop, increase vis to 1 1/4 miles.
 *** When ALS inop, increase CAT AB RVR to 55, vis to 1 mile; CAT CDE vis to 1 1/4 miles.
 **** Circling NA SE of Rwy 24 and E of Rwy 36 when R-5001 A/B Active.

ALSF-2 MISSED APPROACH: Climb to 2000 direct DAYYO and hold.

ATIS 110.6 270.1	MC GUIRE APP CON/DEP CON 126.475 363.8	TOWER 118.65 255.6	GND CON 121.8 275.8	PAR
---------------------	-------------------------------------------	-----------------------	------------------------	-----



NE-2, 14 MAY 2026 to 11 JUN 2026

NE-2, 14 MAY 2026 to 11 JUN 2026

4 NM Holding Pattern 	VGSI and RNAV glidepath not coincident (VGSI angle 3.00/TCH 76).		2000 DAYYO	ELEV 141	See Supp for declared dist.	TDZE 131
	GP 3.00° TCH 56					
CATEGORY	A	B	C	D	E	
LPV DA*	331/18		200	(200-1/2)		
LNAV/VNAV DA**	560/40		429	(500-3/4)		
LNAV MDA***	560/24	429 (500-1/2)	560/40	429 (500-3/4)		
CIRCLING****	680-1	539 (600-1)	700-1 1/2 (600-1 1/2)	700-2 (600-2)	1200-3 (1100-3)	

WRIGHTSTOWN, NEW JERSEY

MC GUIRE FIELD (JOINT BASE MC GUIRE DIX LAKEHURST) (KWRI)

Amdt 7 18MAY23

40°01'N - 74°36'W

RNAV (GPS) RWY 6