

WRIGHTSTOWN, NEW JERSEY

# RNAV (RNP) Z RWY 24

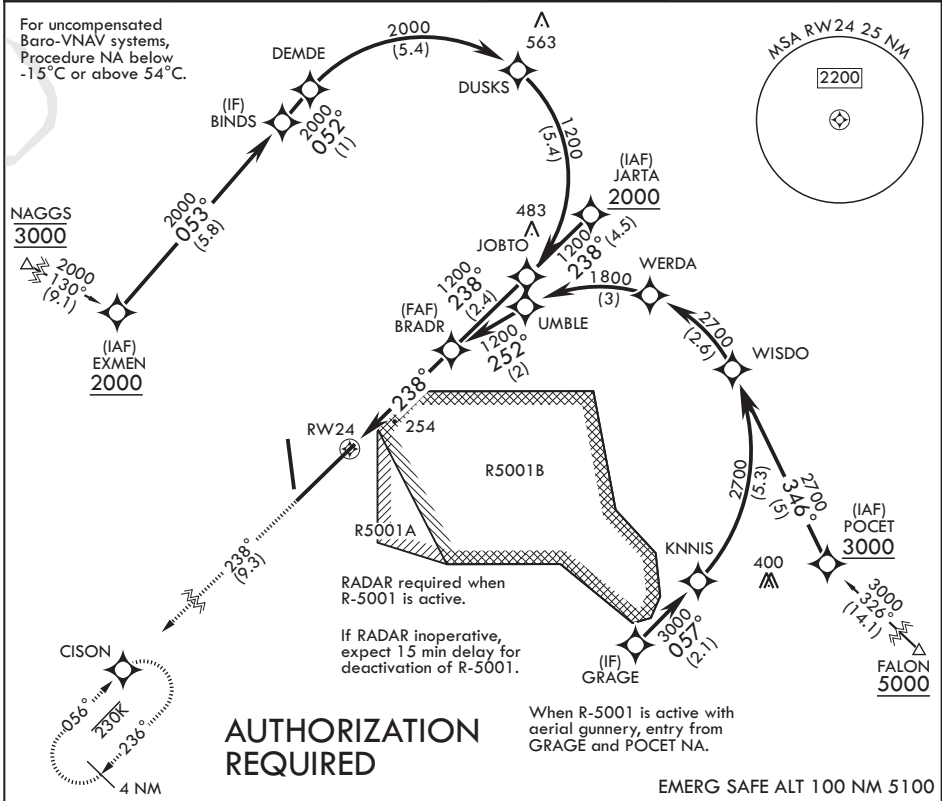
APCH CRS	Rwy Idg	<b>10,456</b>
<b>238°</b>	TDZE	<b>117</b>
	Arprt Elev	<b>141</b>

(USAF)

MC GUIRE FIELD (JOINT BASE MC GUIRE DIX LAKEHURST) (KWRI)

RNP AR APCH. From EXMEN and GRACE: RF.	ALSF-1	MISSED APPROACH: Climb to 2100 on track 238° to CISON and hold, continue to climb-in-hold to 2100.
▼ * When ALS inop increase RVR to 50, vis to 1 mile. ** When ALS inop increase vis to 1 3/8 miles.		

ATIS <b>110.6 270.1</b>	MC GUIRE APP CON/DEP CON <b>126.475 363.8</b>	TOWER <b>118.65 255.6</b>	GND CON <b>121.8 275.8</b>	PAR
----------------------------	--	------------------------------	-------------------------------	-----



2100 tr 238°		VGSI and RNAV glidepath not coincident (VGSI Angle 3.00/TCH 76).	See planview for multiple IF locations	BRADR 1200	ELEV 141	See Supp for declared dist.	TDZE 117
CATEGORY	A	B	C	D			
RNP 0.10 DA*	449/26	332	(400-½)				
RNP 0.13 DA*	456/26	339	(400-½)				
RNP 0.30 DA**	593/50	476	(500-1)				

WRIGHTSTOWN, NEW JERSEY

Orig 20APR23

MC GUIRE FIELD (JOINT BASE MC GUIRE DIX LAKEHURST) (KWRI)

40°01'N - 74°36'W

# RNAV (RNP) Z RWY 24

NE-2, 14 MAY 2026 to 11 JUN 2026

NE-2, 14 MAY 2026 to 11 JUN 2026